



**Circular
Bio-based
Europe**
Joint Undertaking

CBE JU call 2026: CZECHIA National Info Day

Luisa MASCIA
Project Officer

01.04.2026

 **Bio-based Industries
Consortium**



Co-funded by
the European Union



Circular Bio-based Europe Joint Undertaking

€2 billion

public-private initiative
advancing a competitive
bioeconomy for a
sustainable future

Launched in
2021,
operates until
2031

Part of Horizon
Europe
programme

Supporting
European
bioeconomy

Building on
the success of
its predecessor
BBI JU



European Union
Represented by the
European Commission



Bio-based Industries
Consortium

CBE JU general objectives



Accelerate the innovation process and development of bio-based **innovative** solutions

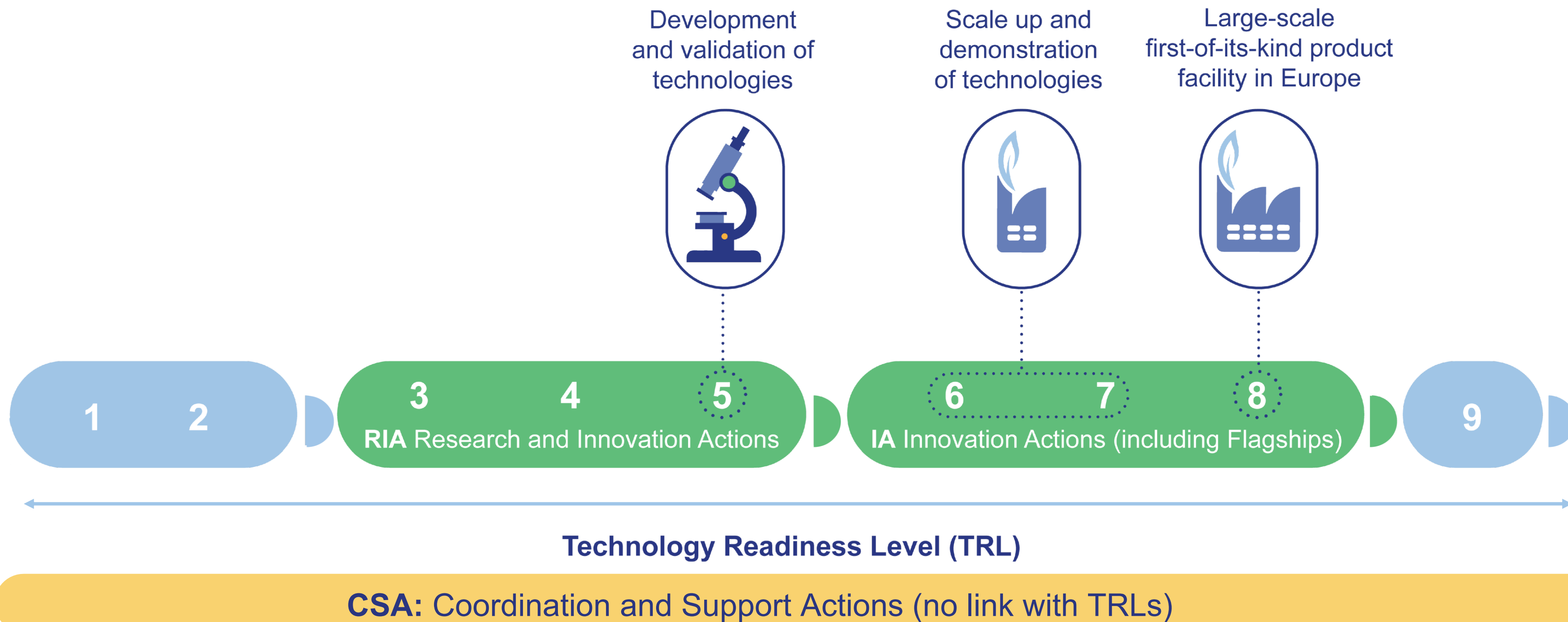


Accelerate **market deployment** of the existing mature and innovative biobased solutions



Ensure a high level of **environmental performance** of bio-based industrial systems

Types of supported actions



CBE JU-funded projects in numbers

2014-2025



220
projects



1,700
participants

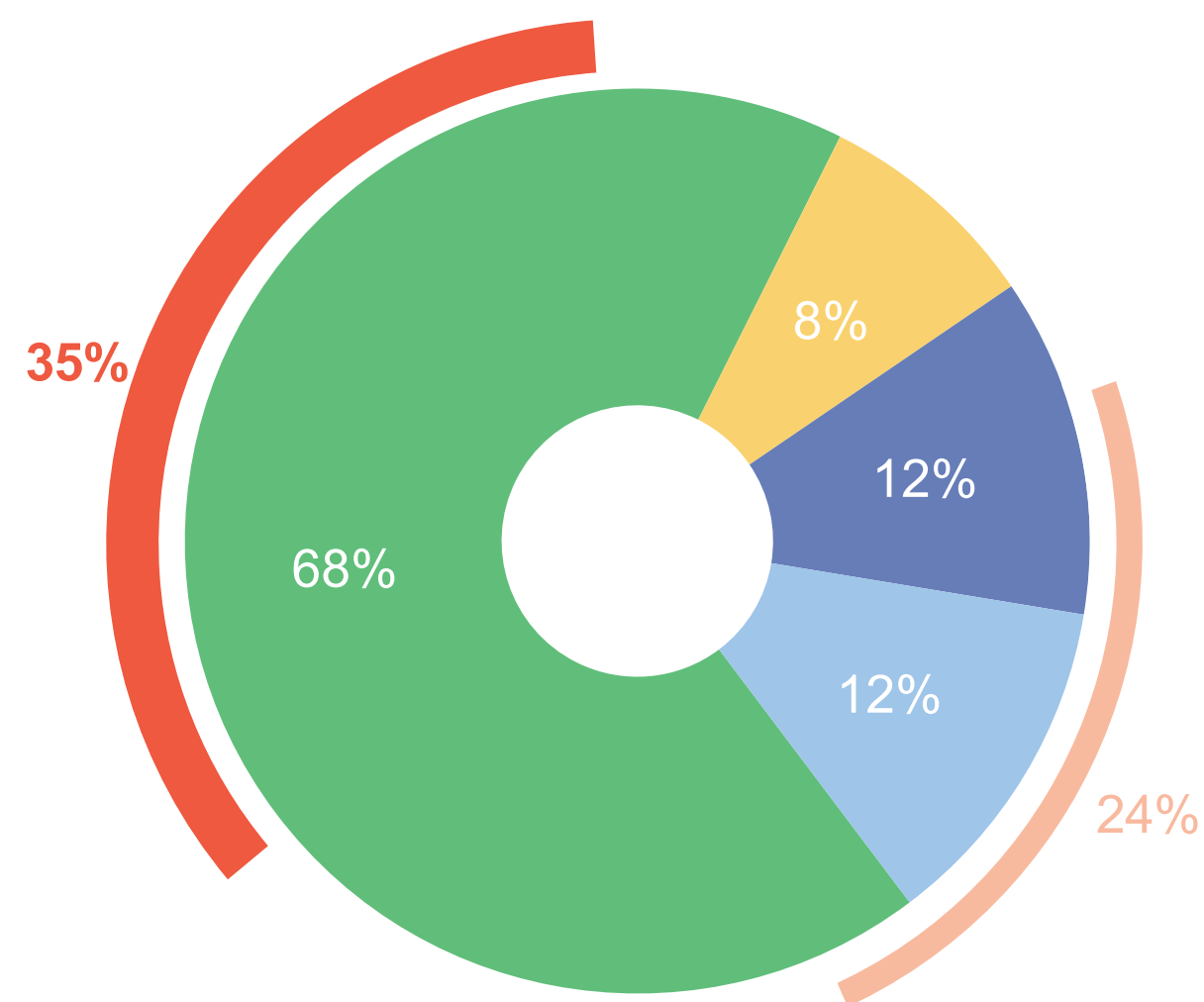


1.3 billion
invested in projects

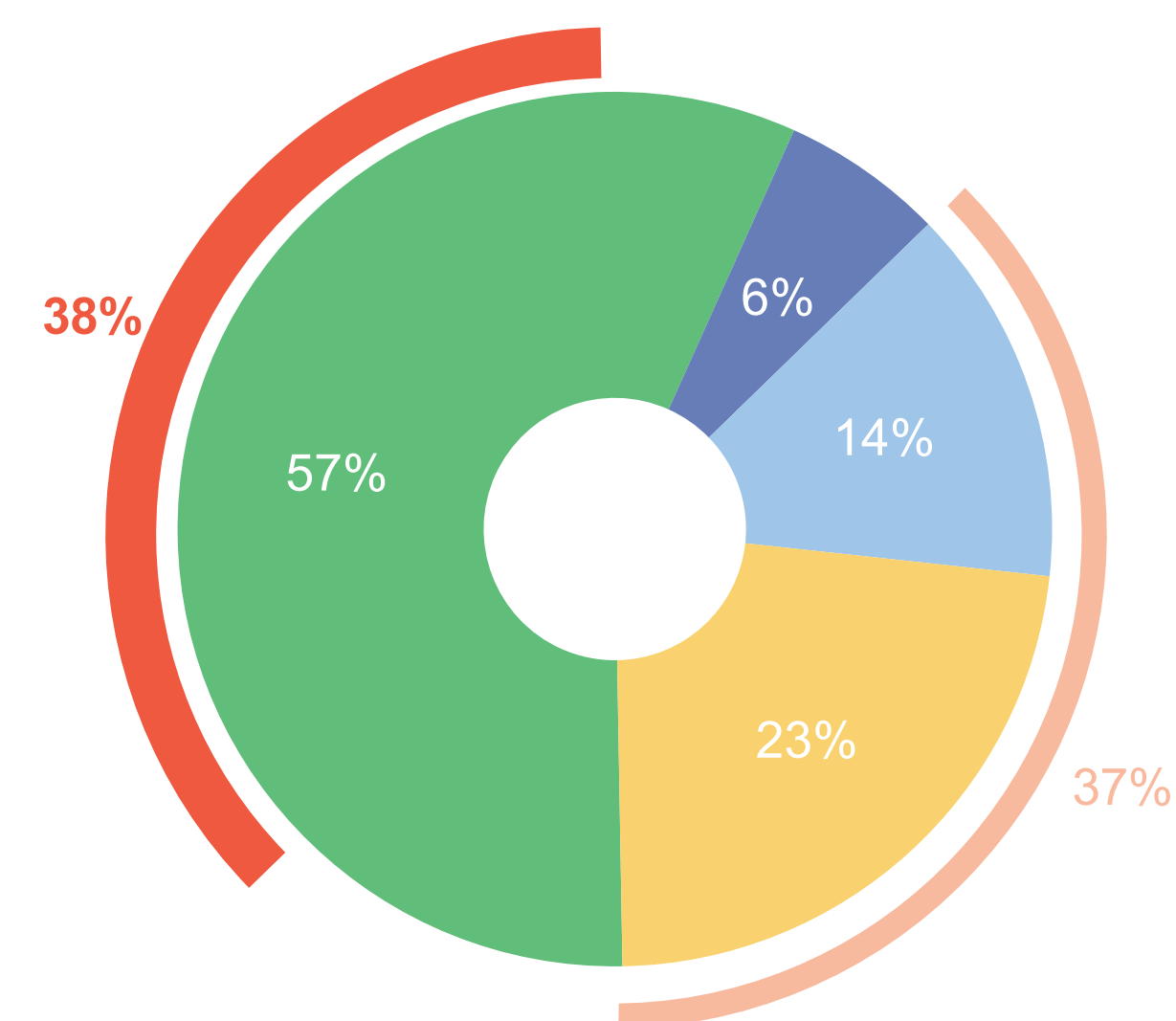


45
countries

Participants



Funding



Higher education establishments

Private companies

Small and medium-sized enterprises

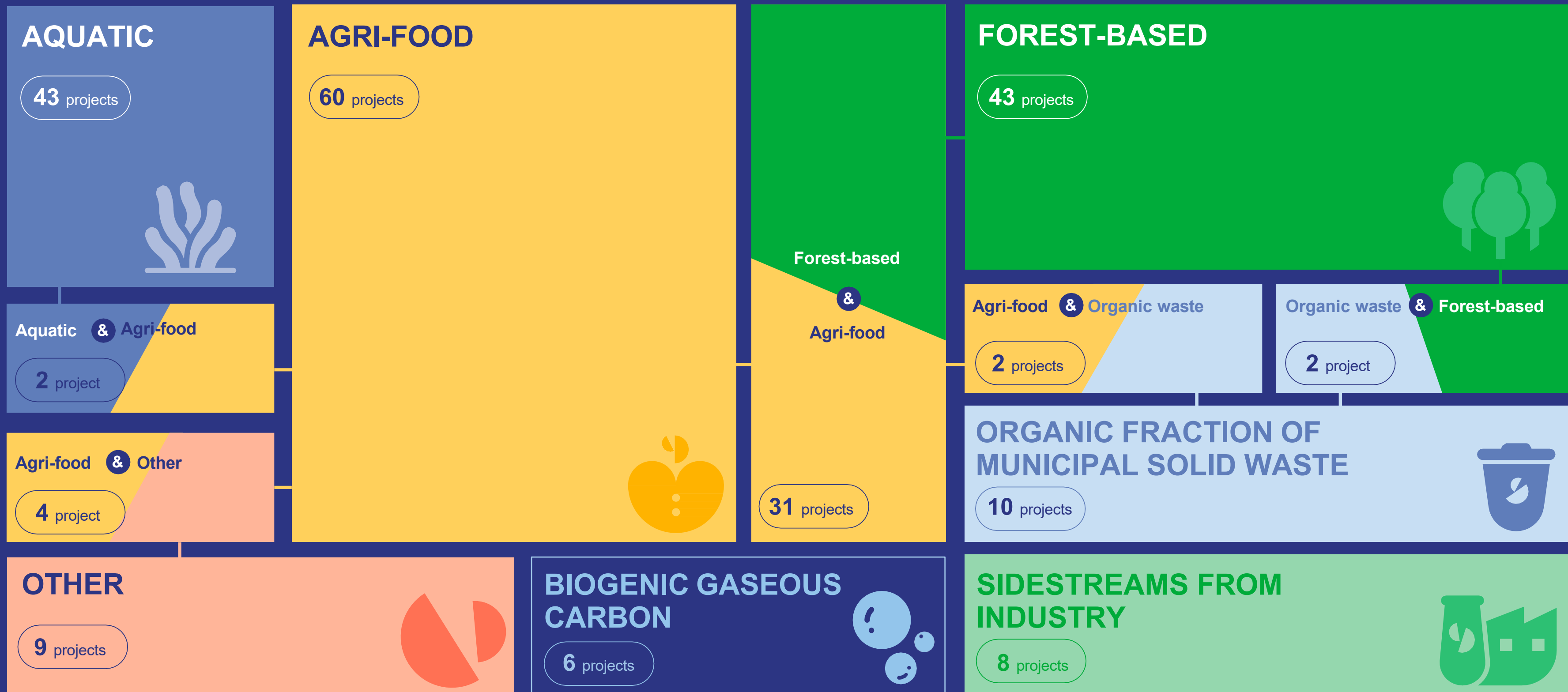
Research centres

Other

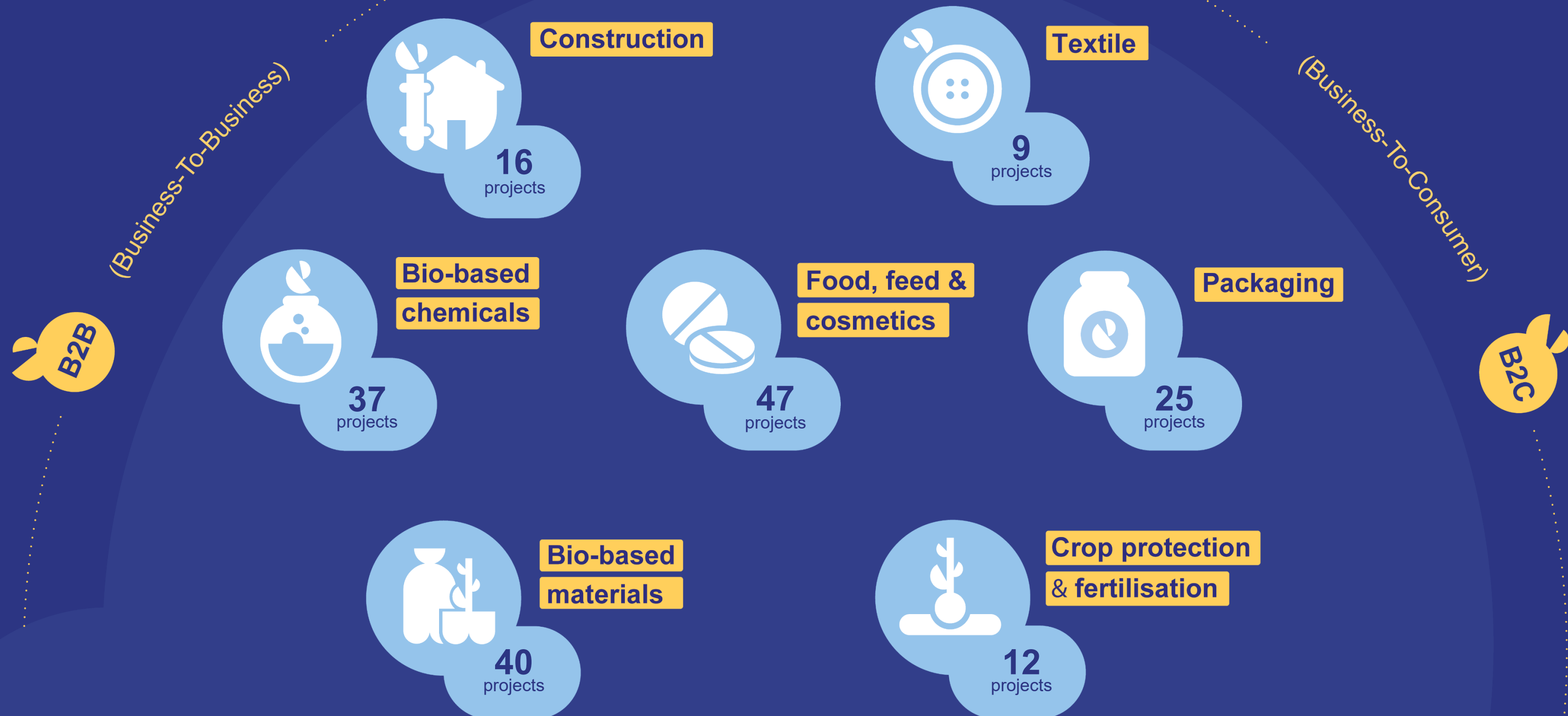
Universities & research centres

Data: CORDA, June 2025

Main feedstock types



Areas of application



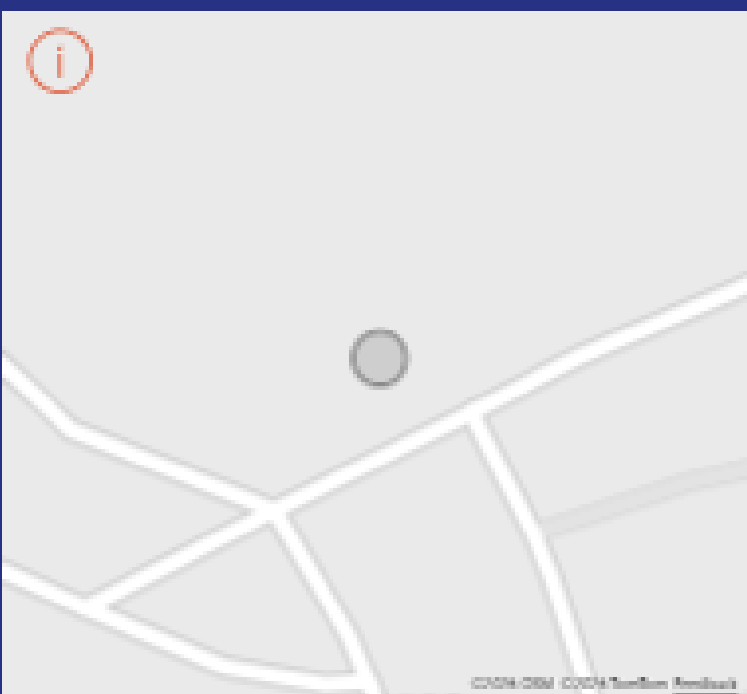
Choose a country

Czechia



0 First-of-their-kind industrial biorefineries

0 Demonstration plants



Locality

Type

Type of action:

- Innovation action - Flagship
- Innovation action
- Research & Innovation action
- Coordination & Support action



Feedstock used:
* by selected biorefineries

Project applications:
* of selected biorefineries

Number of projects

21

0

coordinated projects

Ongoing Completed



Small and medium-sized enterprises (SMEs)

Only private companies

CBE JU funding to SMEs

1.30M€

Number of SMEs

5

Members of the Bio-based Industries Consortium (BIC)

0

Participating projects

- ALEHOOP
- ALLIANCE
- BIObec
- BIOECONOMY GIANTS
- BioINSouth
- BIOntop
- BioSupPack

CBE JU funding



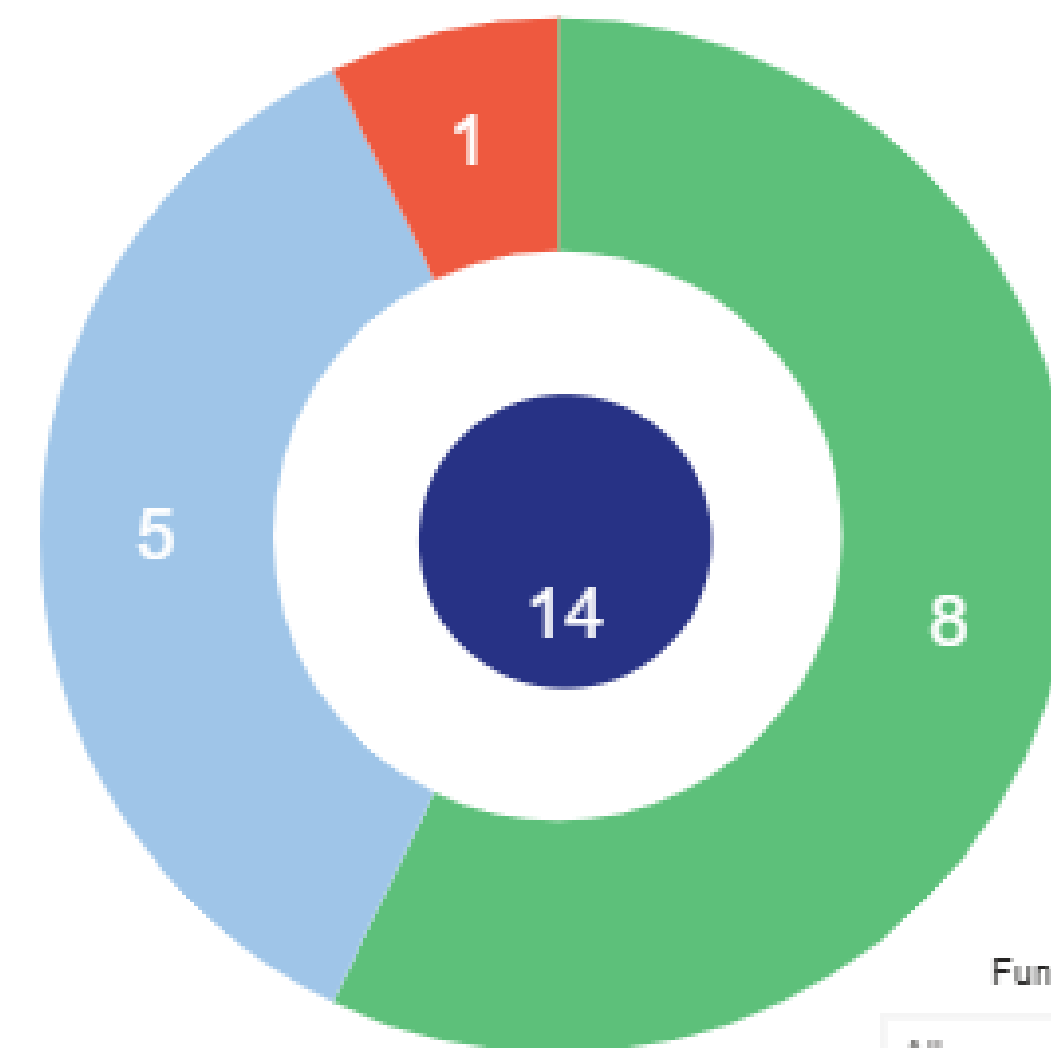
Click on a graph to filter the displayed information. Double-click on the same graph to reset the view.

5.71M€

Private companies Universities & research centres other



Beneficiaries



Funding year:

All

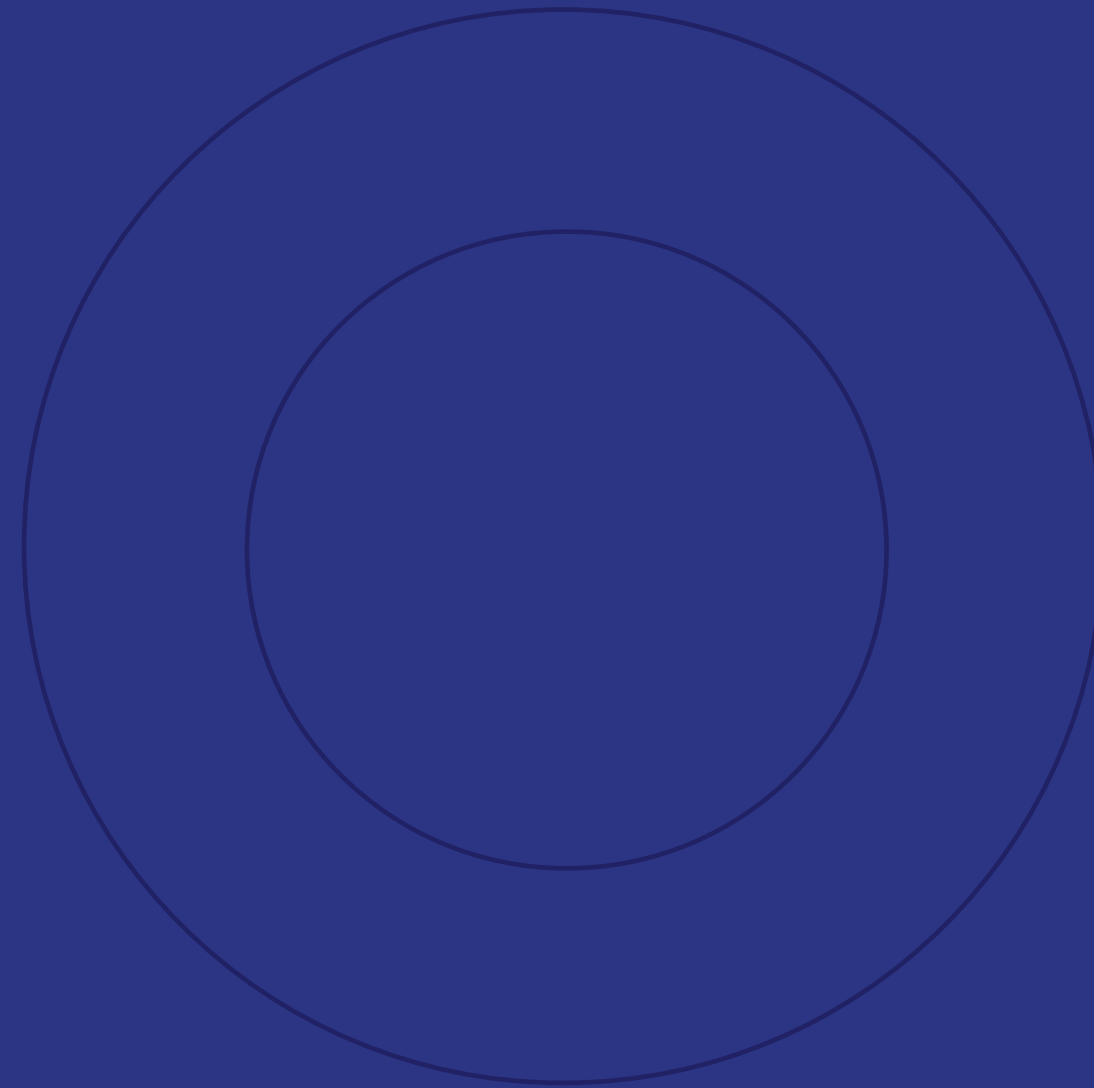
Funding programme:

All

Only beneficiaries from the selected country are displayed.

Participants

Participant	Role	City
BIOEAST HUB CR, Z. U.	partner	Praha
FENIX TNT SRO	partner	Brno
Masarykova univerzita	partner	Brno
Mewery s.r.o.	partner	Brno
MIKROBIOLOGICKY USTAV AV CR V.V.I	partner	Praha 4
NAFIGATE CORPORATION, A.S.	partner	Praha
NAFIGATE PARK SRO	partner	Chrastava
SEVEROMORAVSKÉ VODOVODY A KANALIZACE OSTRAVA AS	partner	Ostrava



CBE JU 2026 call: timeline & topics

Proposal preparation



Call for proposals



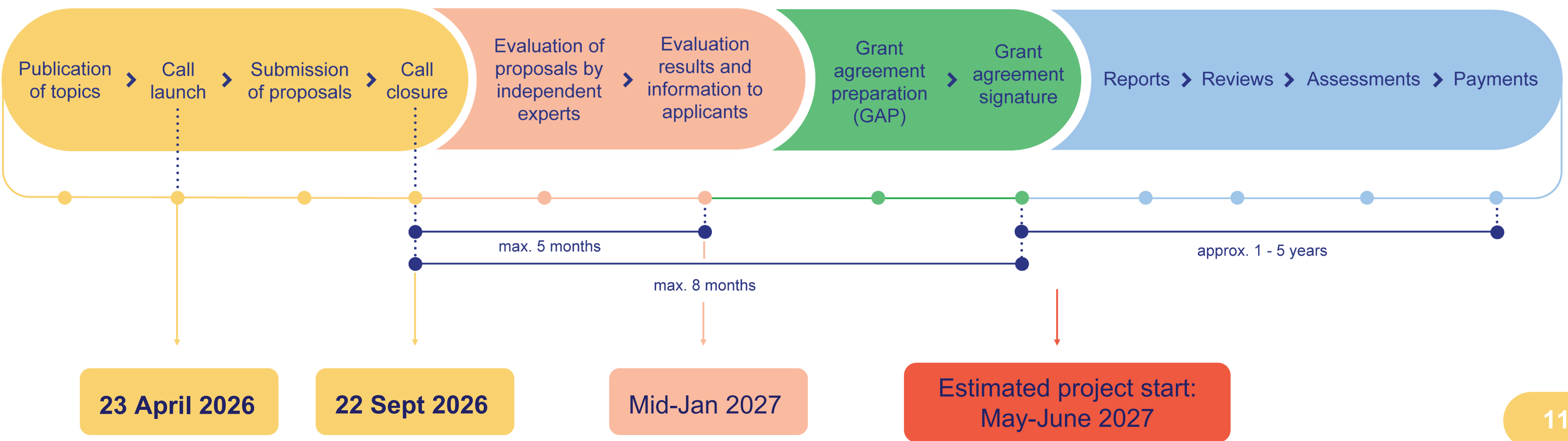
Evaluation



Grant agreement



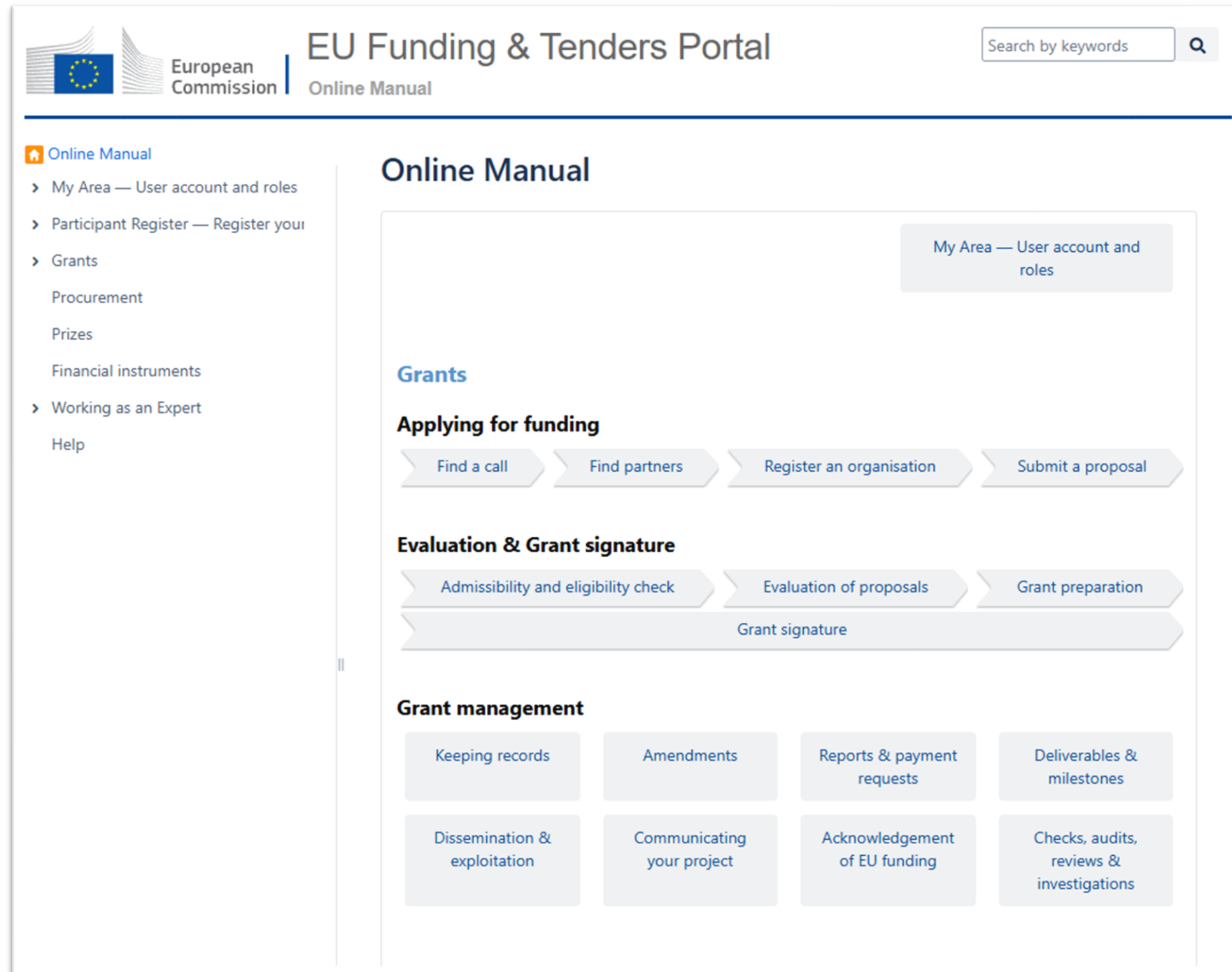
Project management



CBE JU call 2026: 13 topics & their budget

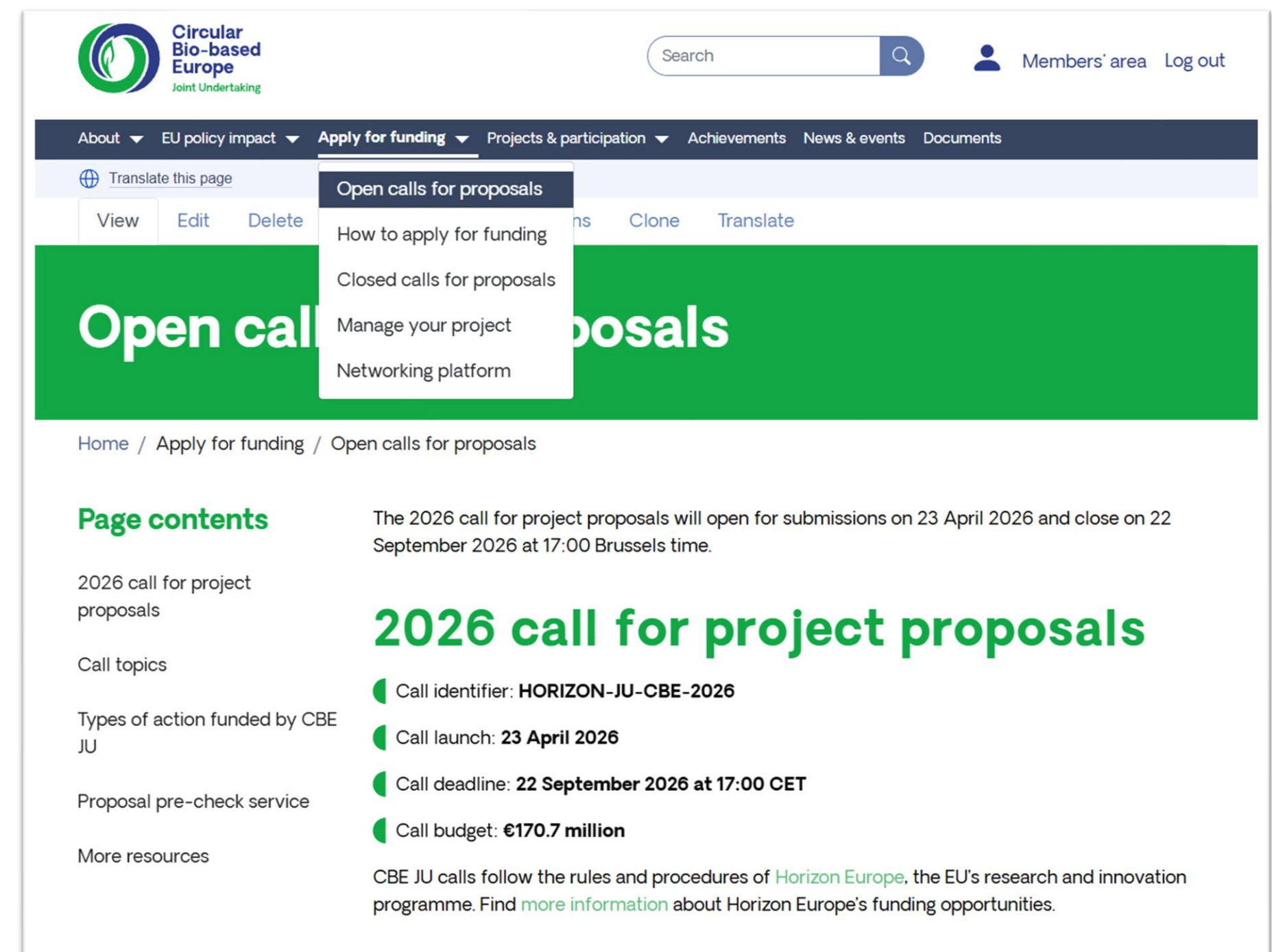
Type of action	Topics HORIZON-JU-CBE-2026	Million EUR
IA- Flagship	IAFlag-01 Boosting biorefinery competitiveness through biotech	20
	IAFlag-02 SSbD bio-based alternatives for fertilising and/or crop protection products	20
	IAFlag-03 SSbD bio-based solutions for home and/or personal care	20
	IAFlag-04 Diversification of nutritional food ingredient sources for increased EU resilience and strategic autonomy	20
IA	IA-01 Biotech routes for valorisation of residual biomass	14
	IA-02 Bio-based additives as alternatives to unlock and increase recyclability and/or biodegradability	14
	IA-03 Bio-based chemicals and/or materials from woody residues	14
	IA-04 High-performance, circular-by-design, bio-based thermosets	14
	IA-05 Films and coatings for circular packaging	14
RIA	R-01 Addressing separation and purification challenges in biorefineries	6.5
	R-02 SSbD bio-based polymers from alternative sources	6.5
	R-03 Develop breakthrough and sustainable bio-based (man-made and/or modified natural) textile fibres	6.5
CSA	S-01 Supporting industry in the switch to sustainable and circular bio-based products and processes	1.2
Total		170.7

Two main sources of information



The screenshot shows the 'EU Funding & Tenders Portal' with the 'Online Manual' section selected. The page features a search bar, a navigation menu on the left, and a main content area with sections for 'Grants', 'Applying for funding', 'Evaluation & Grant signature', and 'Grant management'. The 'Applying for funding' section includes a flowchart with steps: Find a call, Find partners, Register an organisation, and Submit a proposal. The 'Evaluation & Grant signature' section includes a flowchart with steps: Admissibility and eligibility check, Evaluation of proposals, Grant preparation, and Grant signature. The 'Grant management' section includes a grid of buttons for various tasks like Keeping records, Amendments, Reports & payment requests, Deliverables & milestones, Dissemination & exploitation, Communicating your project, Acknowledgement of EU funding, and Checks, audits, reviews & investigations.

<https://webgate.ec.europa.eu/funding-tenders-opportunities/spaces/OM/pages/1867795/Online+Manual>



The screenshot shows the 'Circular Bio-based Europe' website with the 'Open calls for proposals' page. The page features a search bar, a navigation menu, and a main content area with a green header and a white body. The 'Open calls for proposals' section includes a breadcrumb trail: Home / Apply for funding / Open calls for proposals. The 'Page contents' section lists: 2026 call for project proposals, Call topics, Types of action funded by CBE JU, Proposal pre-check service, and More resources. The '2026 call for project proposals' section includes a call identifier: HORIZON-JU-CBE-2026, a call launch date: 23 April 2026, a call deadline: 22 September 2026 at 17:00 CET, and a call budget: €170.7 million. The page also includes a paragraph about CBE JU calls following the rules and procedures of Horizon Europe.

<https://www.cbe.europa.eu/open-calls-proposals>
(FAQ for applicants, networking platform)



CBE JU vs Horizon Europe

similarities & differences

Horizon Europe + CBE JU requirements

Horizon Europe (HE) rules:

- Eligibility
- Admissibility
- General annexes



HE evaluation criteria:

- Excellence
- Impact
- Implementation



CBE JU AWP 2026

- Topics
- **Specific requirements**
- Budget



Proposal structure

Part A



Part B



Similarities and differences with HE

Funding rate

- RIA: 100%
- IA: 60% (100% non-profit)
- CSA: 100%

Page limit

- RIA: 50 pages
- IA: 70 pages
- CSA: 30 pages

Scoring thresholds

- Excellence: 3/5
- Impact: 4/5
- Implementation: 3/5
- Total: 11/15

Award criteria

- RIA, IA, CSA: Excellence, impact, implementation
- + Impact:
Ability to ensure 5% (RIA), 15% (IA) or 20% (IAFlag) of in-kind contribution to operational activities (IKOP) = minimum IKOP percentage

CBE JU vs HE 'general annexes'

- **Eligibility & admissibility criteria**

- Same as Horizon Europe - General Annexes WP 2026-2027 (no derogation)
- Most common issue in previous calls (although still rare overall): consortium composition
 - » for RIAs and IAs incl. flagships: min. 3 independent legal entities, with at least 1 from a Member State (MS), and 2 others from different MS and/or Associated Countries)

- **Priority order in case of equal scores? Same rules as mentioned in the Horizon Europe General Annexes**
(no derogation)

- 1) Proposals that address aspects of the call that have not otherwise been covered by more highly ranked proposals will be considered to have the highest priority.
- 2) The proposals identified under 1), if any, will themselves be prioritised according to the scores they have been awarded for 'Excellence'. When these scores are equal, priority will be based on scores for 'Impact'. In the case of 'Innovation actions', priority will be given to the score for 'Impact', followed by that for 'Excellence'.
- 3) If necessary, the gender balance among the researchers with a leading role named in the researchers table in the proposal, will be used as a factor for prioritisation.
- 4) If necessary, any further prioritisation will be based on geographical diversity, defined as the number of Member States or Associated Countries represented in the proposal, not otherwise receiving funds from projects higher up the ranking list (and if equal in number, then by budget).

IKOP vs BIC membership

- **IKOP?**

- Total eligible costs minus total requested funding (of BIC members)
- Only applicable to RIA and IA incl. Flagships
- CBE JU evaluation subcriterion (**5%, 15% or 20% threshold**, depending on type of action)

- **BIC membership**

- CBE JU will check BIC membership during evaluation...
- ...via an Annex to the proposal: 1 pdf file with all 'BIC membership certificates' or BIC members involved in the consortium
- BIC membership certificates to be requested to BIC via <https://bic.elisca.app/membership/certificate/registration>
- When building your consortium, you might encounter organisations interested in becoming a BIC member (and who could 'boost' your IKOP)
- **'Project membership'**: temporary membership option, (only) relevant for CBE JU Calls: the organisation will become a BIC member if their proposal is successful

In-kind contribution to operational activities (IKOP) (1/3)

Flagships

IKOP = Total eligible costs – Requested EU contribution (of private members)

In CBE JU, the only private member is the **Bio-based Industries Consortium (BIC)**.

→ **Minimum percentage of IKOP** must be reflected in the budget of partners that are BIC members.

Example 1: IA Flagship Criterion: $\geq 20\%$ IKOP	BIC member	Industry / Academia	Total eligible costs	Funding rate	Requested EU contribution	IKOP
Beneficiary 1 - Coordinator (BIC member)	Y	industry	€ 7,000,000	60%	€ 4,200,000	€ 2,800,000
Beneficiary 2	N	academia	€ 590,000	100%	€ 590,000	
Beneficiary 3 (BIC member)	Y	industry	€ 5,000,000	60%	€ 3,000,000	€ 2,000,000
Beneficiary 4	N	industry	€ 3,000,000	60%	€ 1,800,000	
Beneficiary 5	N	academia	€ 800,000	100%	€ 800,000	
TOTAL			€ 16,390,000		€ 10,390,000	€ 4,800,000

$$\text{Percentage IKOP} = \frac{\text{€ 4,800,000}}{\text{€ 16,390,000}} = 29,3\% > 20\% \quad \text{👍}$$

In-kind contribution to operational activities (IKOP) (2/3)

Innovation Actions

IKOP = Total eligible costs – Requested EU contribution (of private members)

In CBE JU, the only private member is the **Bio-based Industries Consortium (BIC)**.

→ **Minimum percentage of IKOP** must be reflected in the budget of partners that are BIC members.

Example 2: IA Criterion: $\geq 15\%$ IKOP	BIC member	Industry / Academia	Total eligible costs	Funding rate	Requested EU contribution	IKOP
Beneficiary 1 - Coordinator (BIC member)	Y	industry	€ 3,200,000	60%	€ 1,920,000	€ 1,280,000
Beneficiary 2	N	academia	€ 590,000	100%	€ 590,000	
Beneficiary 3	N	industry	€ 1,500,000	60%	€ 900,000	
Beneficiary 4	N	industry	€ 3,000,000	60%	€ 1,800,000	
Beneficiary 5	N	academia	€ 800,000	100%	€ 800,000	
TOTAL			€ 9,090,000		€ 6,010,000	€ 1,280,000

$$\text{Percentage IKOP} = \frac{\text{€1,280,000}}{\text{€ 9,090,000}} = 14,1\% < 15\% \quad \text{👎}$$

In-kind contribution to operational activities (IKOP) (3/3)

Research and Innovation Actions

IKOP = Total eligible costs – Requested EU contribution (of private members)

In CBE JU, the only private member is the **Bio-based Industries Consortium (BIC)**.

Minimum percentage of **IKOP** must be reflected in the budget of partners that are BIC members

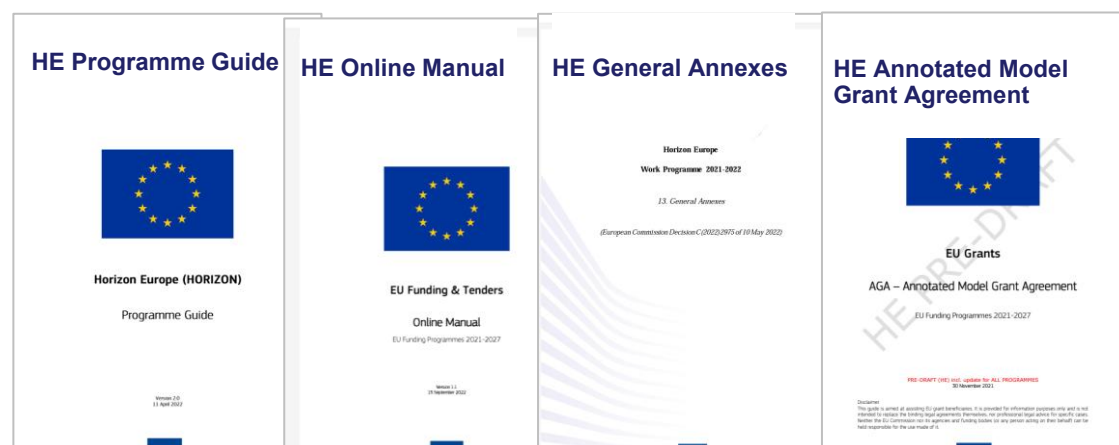
Example 3: RIAs Criterion: <u>≥ 5% IKOP</u>	BIC member	Industry / Academia	Total eligible costs	Funding rate	Requested EU contribution	IKOP (only for BIC members)
Beneficiary 1 - Coordinator	Y	industry	€ 2,000,000	100%	€ 2,000,000	
Beneficiary 2	N	academia	€ 590,000	100%	€ 590,000	
Beneficiary 3 (BIC member)	Y	industry	€ 700,000	100%	€ 500,000	€ 200,000
Beneficiary 4	N	industry	€ 300,000	100%	€ 300,000	
Beneficiary 5	N	academia	€ 800,000	100%	€ 600,000	
TOTAL			€ 4,390,000		€ 3,990,000	€ 200,000

$$\text{Percentage IKOP} = \frac{\text{€ 200,000}}{\text{€ 4,390,000}} = 4,5\% < 5\% \quad \text{👎}$$

Horizon Europe + CBE JU requirements

Horizon Europe (HE) rules:

- Eligibility
- Admissibility
- General annexes



HE evaluation criteria:

- Excellence
- Impact
- Implementation



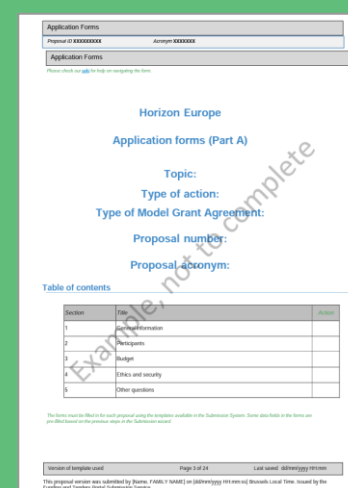
CBE JU AWP 2026

- **Topics**
- **Specific requirements**
- Budget



Proposal structure

Part A



Part B



Call topic structure

Topic

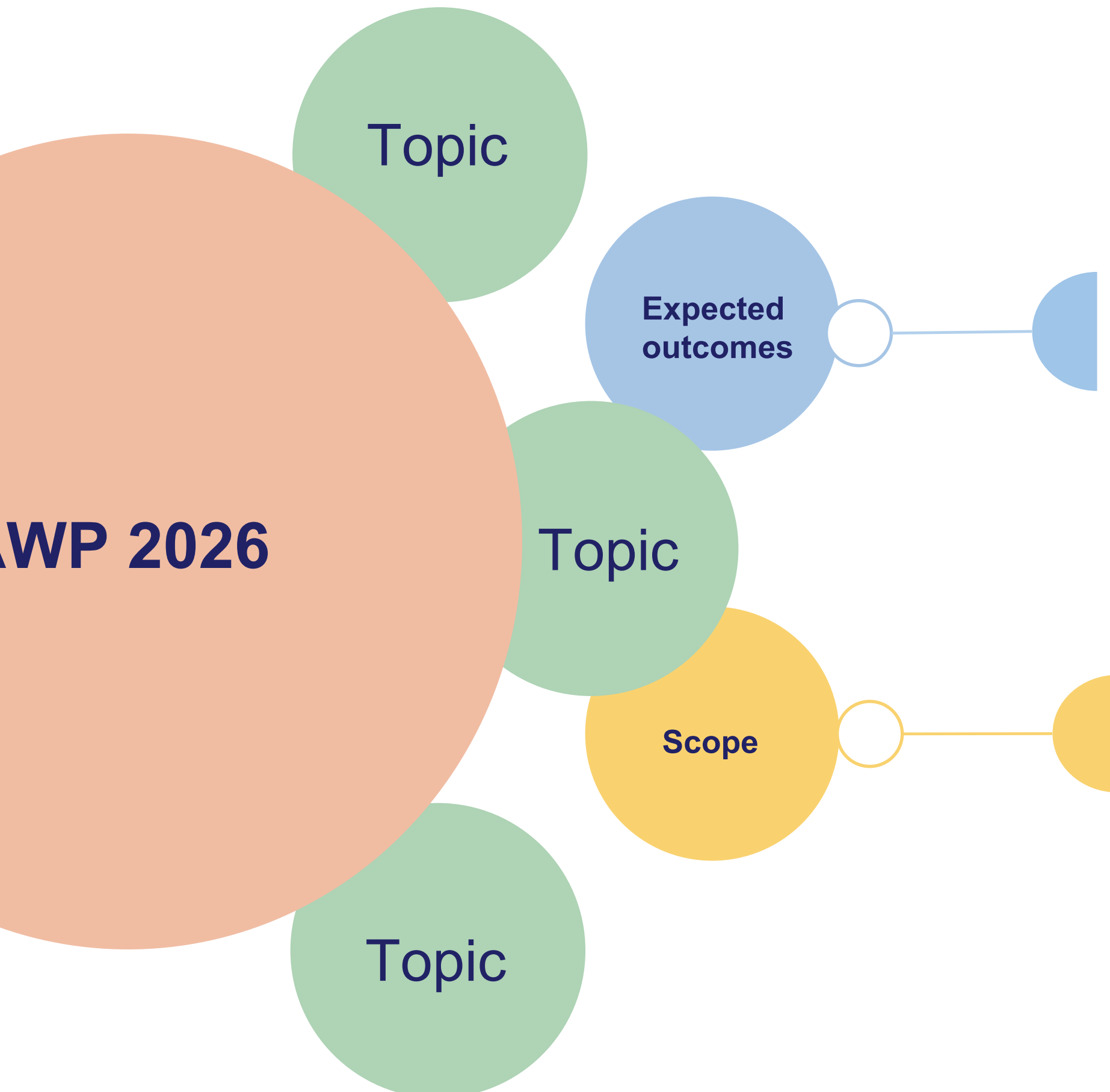
AWP 2026

Topic

Topic

HORIZON-JU-CBE-2026-XX-NN	Topic title
Type of action	Innovation Action
Indicative budget	The total indicative budget for the topic is EUR 14 million
Expected EU contribution per project	It is estimated that a contribution of EUR 7 million would allow these outcomes to be addressed appropriately. Nonetheless, this does not preclude submission and selection of a proposal requesting different amounts
TRL	TRL 7 at the end of the project
Link to CBE JU Specific Objectives	1.1: Increase the intensity of cross-disciplinary research and innovation activities
Link to CBE JU SRIA Strategic Priorities	1.1.2: Develop innovative production systems in the bio-based industry 1.1.3: Develop innovative bio-based products
CBE JU KPIs	4.5 Number of products with improved life cycle environmental performance 5.1 Number of innovative products that are biodegradable, compostable, recyclable, reused or upcycled (circular-by-design) 5.2 Number of projects developing circular production practices (incl. industrial & industrial urban symbiosis) 6 Increase innovative bio-based outputs and products

Call topic structure



The 'change' to be achieved

- Provides a broad description of what is the **impact** to be achieved by the project
- The **dissemination and exploitation** of future research results are vital for the impact

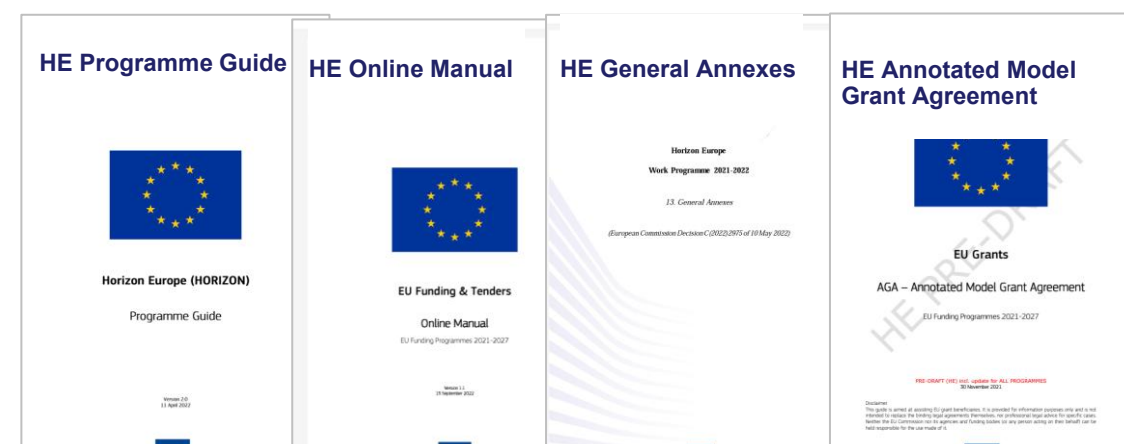
The 'problem'

- Identifies the aspects of the **challenge** that needs to be tackled
- Specifies a **perimeter** to the problem described
- Does not specify the expected solutions to the problem, nor the approach to be taken

Horizon Europe + CBE JU requirements

Horizon Europe (HE) rules:

- Eligibility
- Admissibility
- General annexes



HE evaluation criteria:

- Excellence
- Impact
- Implementation



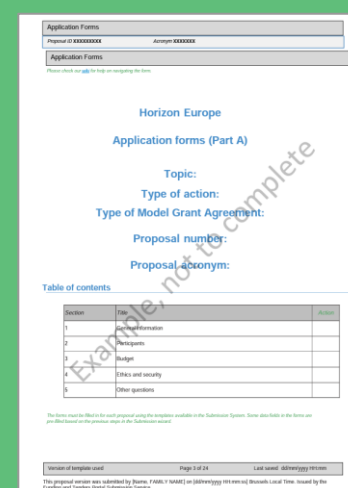
CBE JU AWP 2026

- Topics
- **Specific requirements**
- Budget

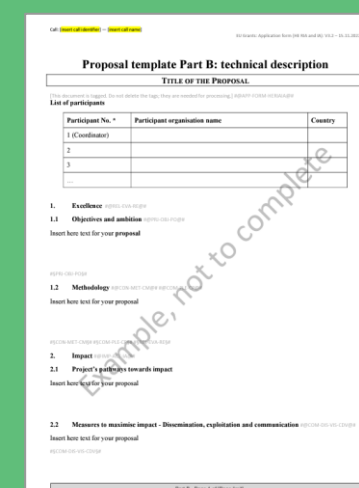


Proposal structure

Part A



Part B



CBE JU Call 2026 specific requirements (1/4)

Part B – Methodology

Specific CBE JU requirement	Type of action	Section in Part B
Bio-based feedstock		
<ul style="list-style-type: none"> Description of the feedstock, incl. geographical origin and how it is produced or generated, respecting ecological limits 	RIA & IA, incl. FLAG	1.2 Methodology
<ul style="list-style-type: none"> If agricultural biomass is used, clarify the amounts needed and assess any potential interference with food supply chain 	IA, incl. FLAG	

The description of the feedstock includes now the description of the geographical origin (former eligibility criterion) and the sustainability aspects (previously included as Y/N question).

CBE JU Call 2026 specific requirements (2/4)

Part B – Methodology

Specific CBE JU requirement

Type of action

Section in Part B

Environmental performance

a) Ex-ante assessment

RIA and IA, incl.
FLAG

1.2 Methodology

- Identification of environmental issues
- Estimation of environmental sustainability performance
- preliminary assessment of the carbon capture, use and/or storage potential

b) Ex-post assessment

RIA
IA, incl. FLAG

**3.1 Workplan and
resources**

- Dedicated task for RIA
- Dedicated task or WP (LCSA)

CBE JU Call 2026 specific requirements (3/4)

Part B – Methodology

Specific CBE JU requirement	Type of action	Section in Part B
Multi-actor approach (MAA)	All types of actions	1.2 Methodology
Digital technologies	RIA and IA, incl. FLAG	1.2 Methodology
Cross-disciplinary aspects and Social Sciences and Humanities (SSH)	All types of actions	1.2 Methodology

CBE JU Call 2026 specific requirements (4/4)

Part B – Impact

Specific CBE JU requirement

Type of action

Section in Part B

New! Socio-economic impacts, regarding the creation and/or distribution of socio-economic value along the whole value chain

All IAs, incl., FLAG

2.1 Project's pathways towards impact

Business aspects:

- Qualitative **business case**
- Quantified **business case and business model**
- Executive summary of the **business plan**, including the underlying business case and business model
- Business plan

RIA

IA non-FLAG

FLAG

FLAG

2.2 Measures to maximise impact – D&E&C

FLAG: Annex

CBE JU 2026 call:

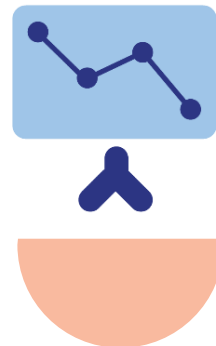
lessons learnt and tips & tricks to
prepare a good proposal

A good and convincing CBE JU proposal



Excellence

- Ensure that the proposed work is within the scope of the topic
- Demonstrate that your idea is ambitious and goes beyond the state of the art
- Ensure that the proposed methodology is sound



High impact

- Show clearly how your work could contribute to the outcomes and impacts defined in the topic
- Describe the planned measures to maximise the impact of the project ('plan for dissemination & exploitation including communication activities')
- Present a convincing business prospect (for FLAG business plan !)



Solid implementation

- Demonstrate the quality of the implementation, including work plan, resources and participants
- Be realistic and include an accurate risk assessment with appropriate mitigation measures

Lessons learnt from past calls



Start early! We see a correlation between earlier proposal creation date (in the Funding & Tenders Portal) and higher evaluation result



Don't lose "easy" points ("low hanging fruits"):

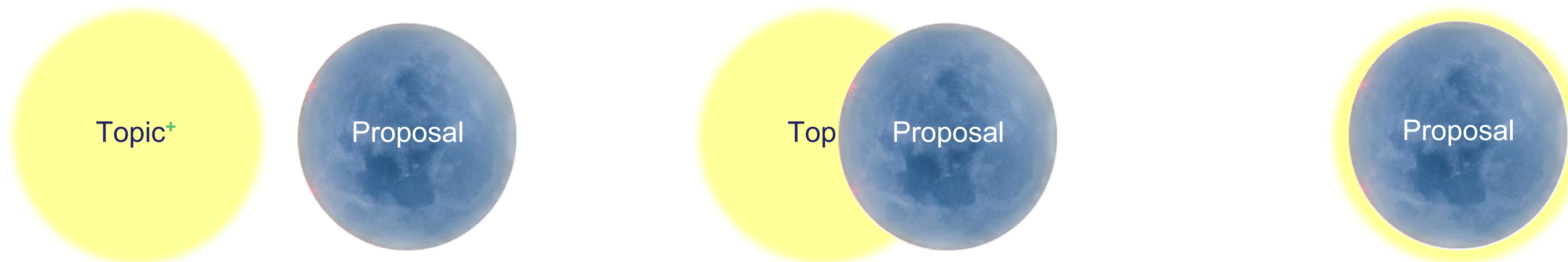
- Make sure not to forget any requested specific requirement from CBE JU or the topic text (e.g. dedicated tasks in the Work Plan)
- Double check IKOP calculation in the proposal budget table and ensure consistency with the annexed BIC annexes



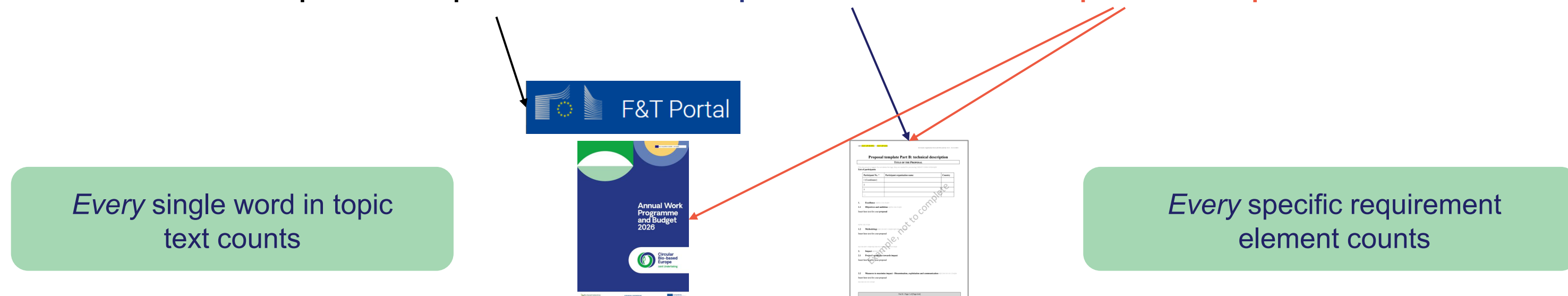
Avoid frequent issues:

- Unconvincing business part (business case, model or plan)
- Unsound risk management and work plan
- Mismatch between topic Scope and Expected outcomes

Aim for total “topic eclipse”



Topic⁺ = Topic text + HE requirements + CBE specific requirements



Read carefully the **AWP2026** and the **Strategic Research and Innovation Agenda (SRIA)**, for a good understanding of the context and long-term objectives of CBE JU.

Build a strong consortium

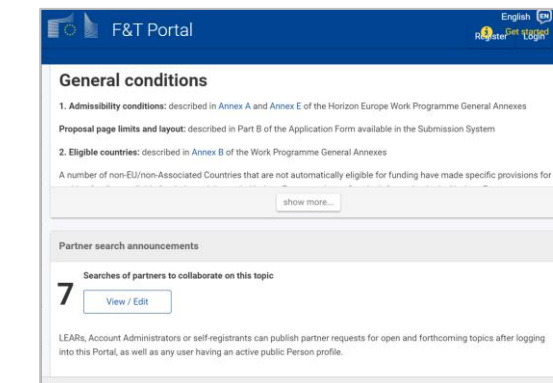
Are there any competence gaps in the consortium?

- Match elements of Topic (and Proposal) to individual partners in the consortium.
- Use the networking opportunities offered by i) **the Funding & Tenders Portal**, ii) **CBE networking platform** and iii) **BIC member networking events**

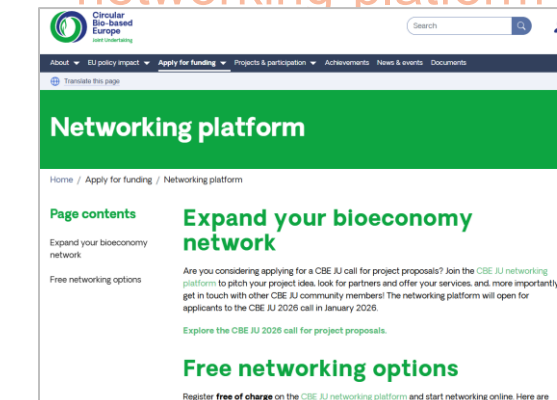
During proposal writing:

- Significant level of upfront **commitment** from all partners is crucial, as costs are not eligible before project start.
- High level of **confidence** between partners is key.
- Talk early about handling of **IPR** – these will need to be confirmed formally in the Consortium Agreement before signature of the Grant Agreement.

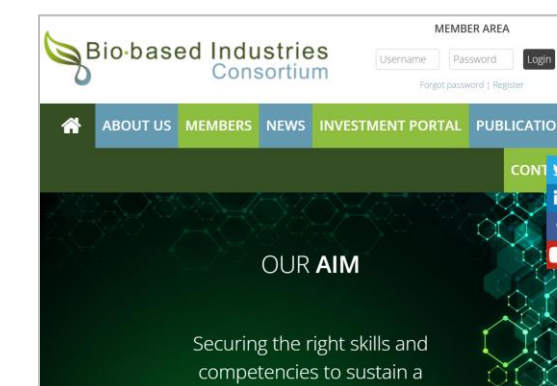
ec.europa.eu/info/funding-tenders/opportunities/portal



cbe.europa.eu/networking-platform

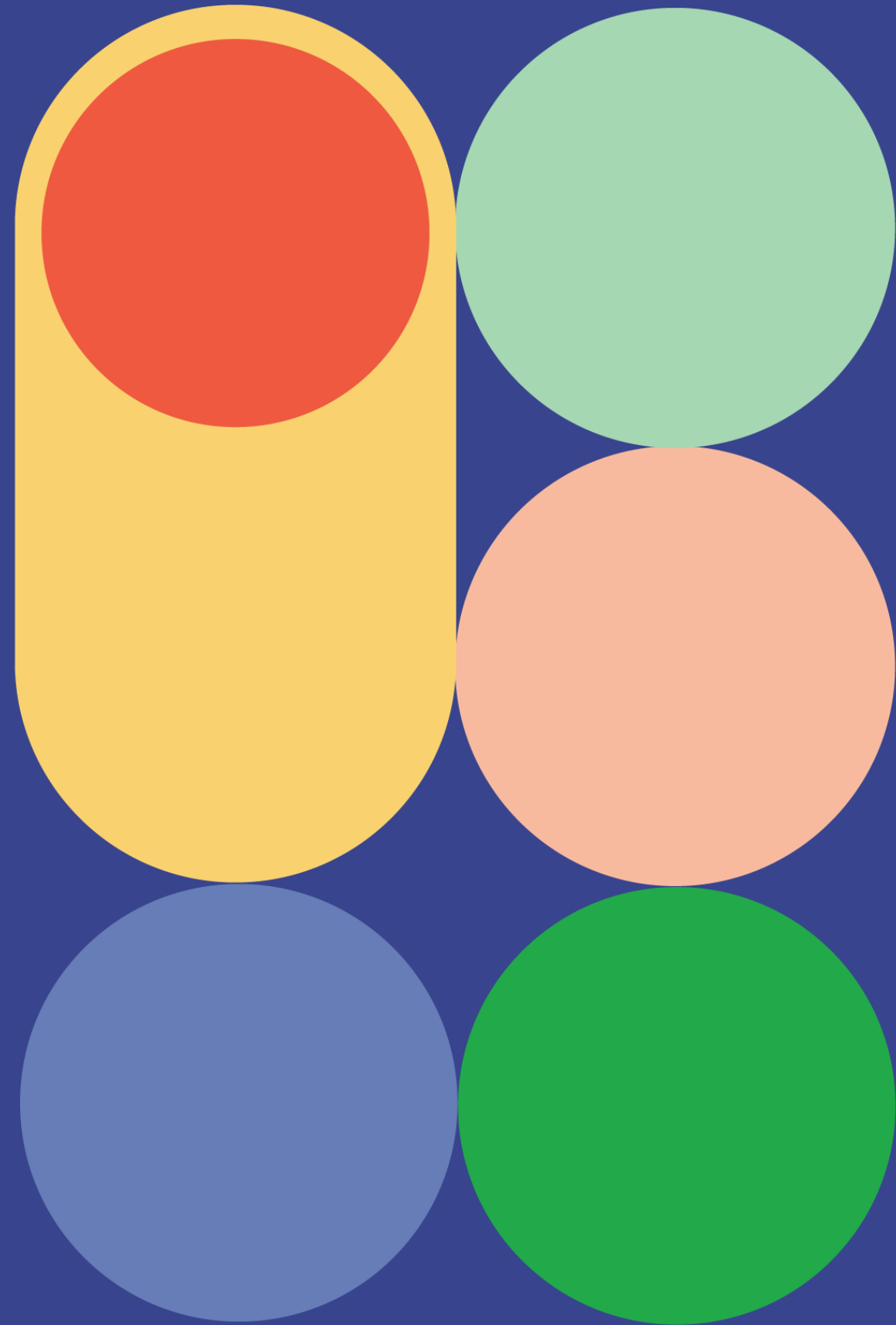


biconsortium.eu



Networking opportunities

- Funding & tender Opportunities Portal (partner search announcements)
- **BIC networking** (<https://biconsortium.eu/membership>)
- **CBE JU networking platform** (<https://www.cbe.europa.eu/networking-platform>)
 - Open as of 13 January 2026, and will remain open until (at least) call closure on 22 Sep 2026
 - Different services: **‘Find & be found’**
 - Partner search & expressing interest in on or more topics;
 - Presentation of project ideas
 - Showcasing / offering your expertise
 - Direct messaging & scheduling B2B meetings
 - Registration for the CBE JU info days



CBE JU

Networking platform 2026

Where future project
partners come together

Connect. Collaborate.





CBE JU

Networking Event 2026

Track, Brussels | 21 April

[Register now!](#) 

Meet. Connect. Collaborate.

Networking event – training sessions

Three trainings sessions will complement the matchmaking activities

21 April,
Track
Brussels

10:00 – 11:30 | Widening participants

Last places

- Increase participation from widening countries
- Session organised in collaboration with [CARE4BIO](#) and [Widera-Net](#)

11:30 – 13:00 | Start-ups & SMEs

Full

- Build robust business cases & understand what makes projects attract private funding
- Session organised in collaboration with the [European Circular Bioeconomy Fund \(ECBF\)](#)

14:30 – 16:00 | Flagship project proposals

Full

- Lessons from funded CBE JU Flagship projects
- Session organised in collaboration with the [Bio-based Industries Consortium \(BIC\)](#)

Register on the [CBE JU Networking event](#) page

For participants from widening countries

As part of the CBE JU widening participation strategy actions:

Travel grants to attend the CBE JU networking event

For participants from Albania, Armenia, Bulgaria, Croatia, Cyprus, **Czechia**, Estonia, Georgia, Greece, Hungary, Latvia, Lithuania, North Macedonia, Malta, Moldova, Montenegro, Poland, Romania, Serbia, Slovakia, Spain – Canary Islands, Tunisia and Türkiye

<https://ncpwideranet.eu/travel-grants/>

Proposal pre-check service

- Applicants from eligible countries can make use of the **pre-check proposal service** offered by the NCP_WIDERA.NET project
- Check the wideraexperts.eu for details



**Circular
Bio-based
Europe**
Joint Undertaking

Subscribe



Contact us

info@cbe.europa.eu

www.cbe.europa.eu

Follow us



Co-funded by
the European Union

