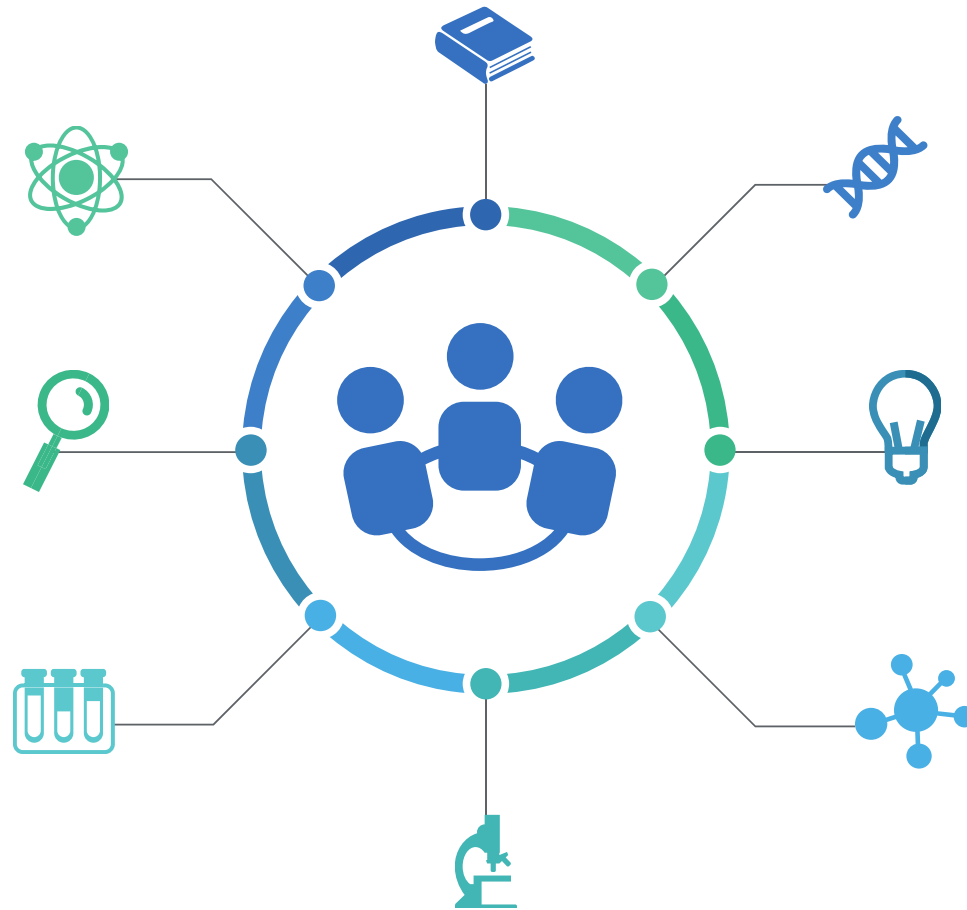


# JRC in support of EU research strategy and policy

Salla Saastamoinen, JRC Deputy Director General

# The need for evidence to inform policy



# Our core strengths



ANTICIPATION



INTEGRATION



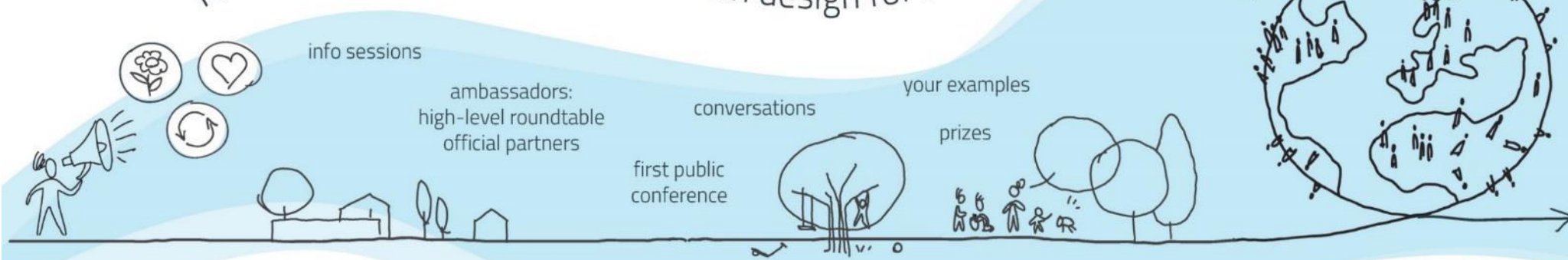
IMPACT

# Foresight

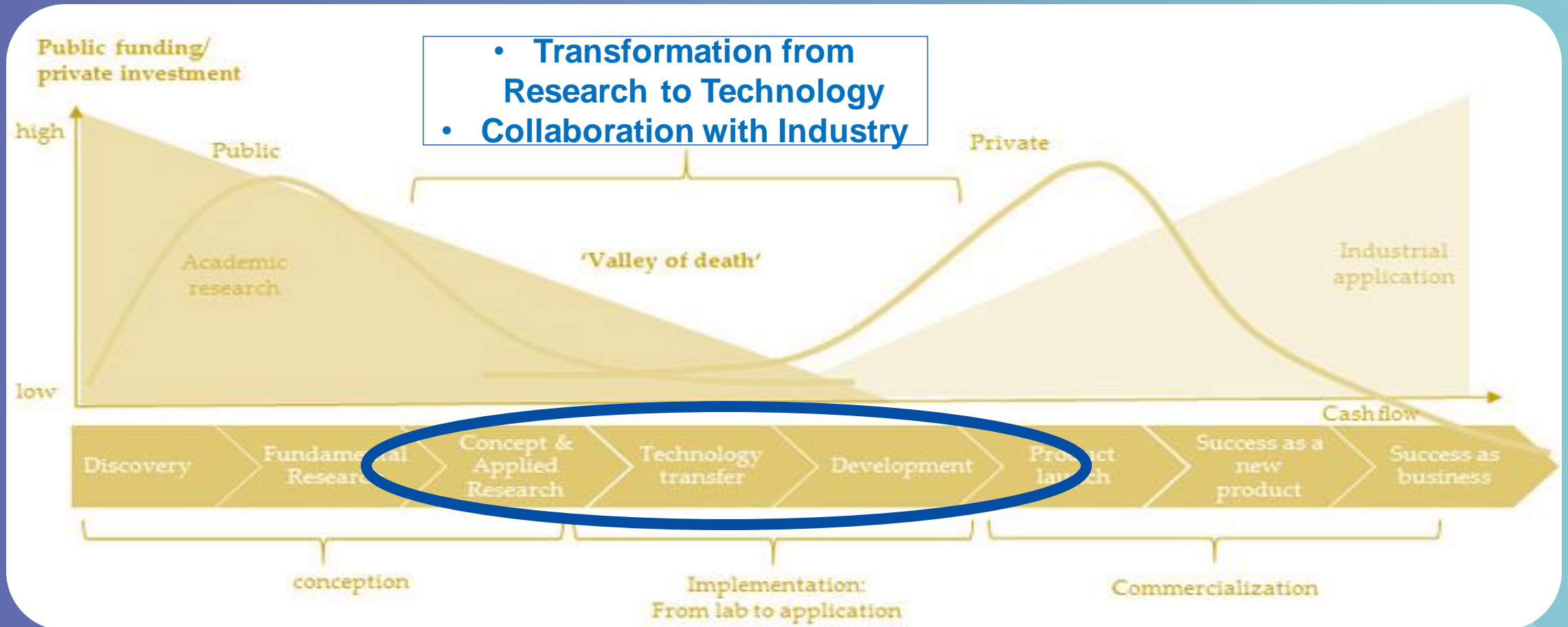


# New European Bauhaus

To revitalise our neighbourhoods with design for sustainability and inclusion



# The Innovation Process



# Science for policy



ANTICIPATE



INTEGRATE



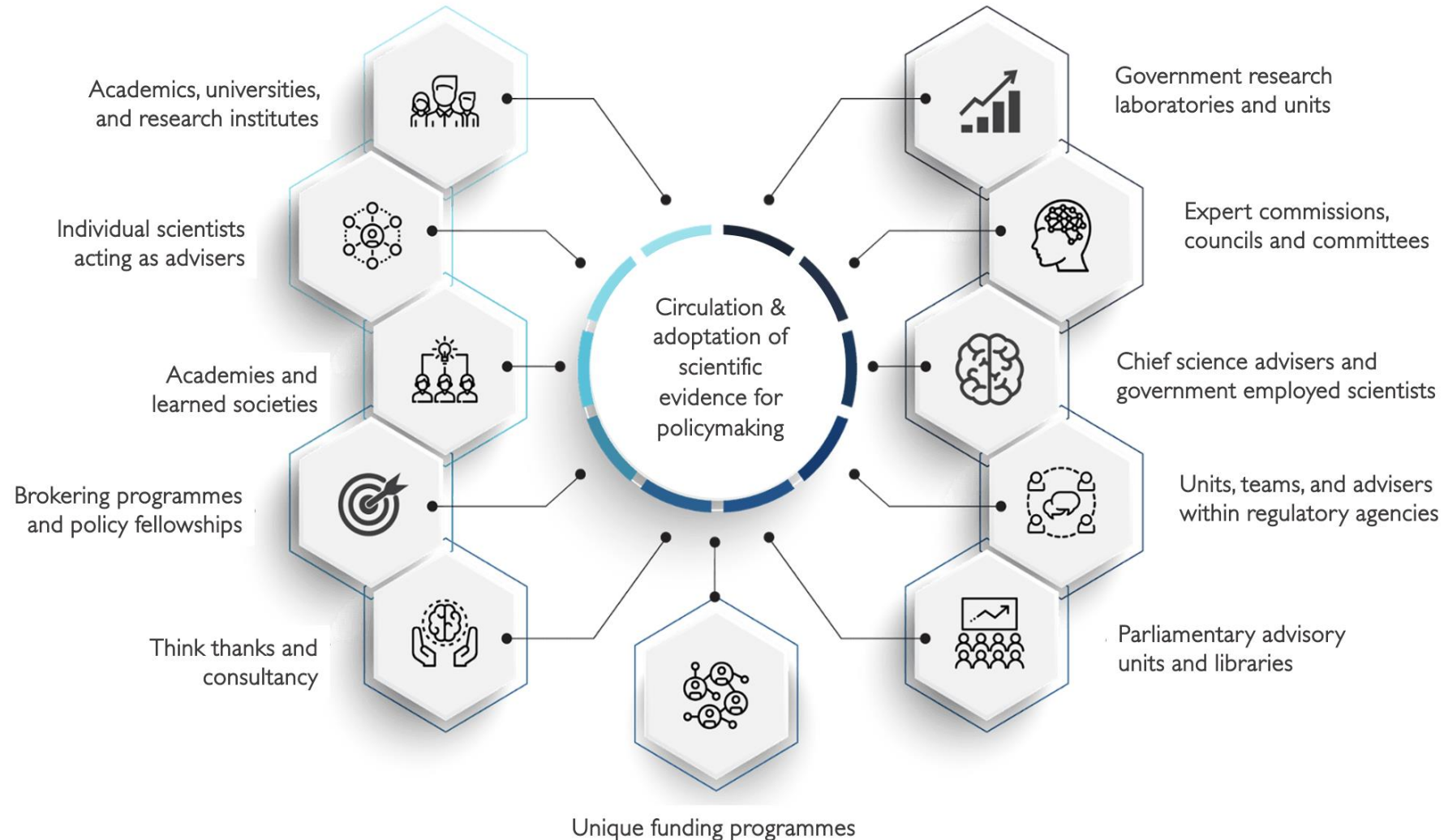
IMPACT

## Our purpose

The Joint Research Centre provides independent, evidence-based knowledge and science, supporting EU policies to positively impact society.

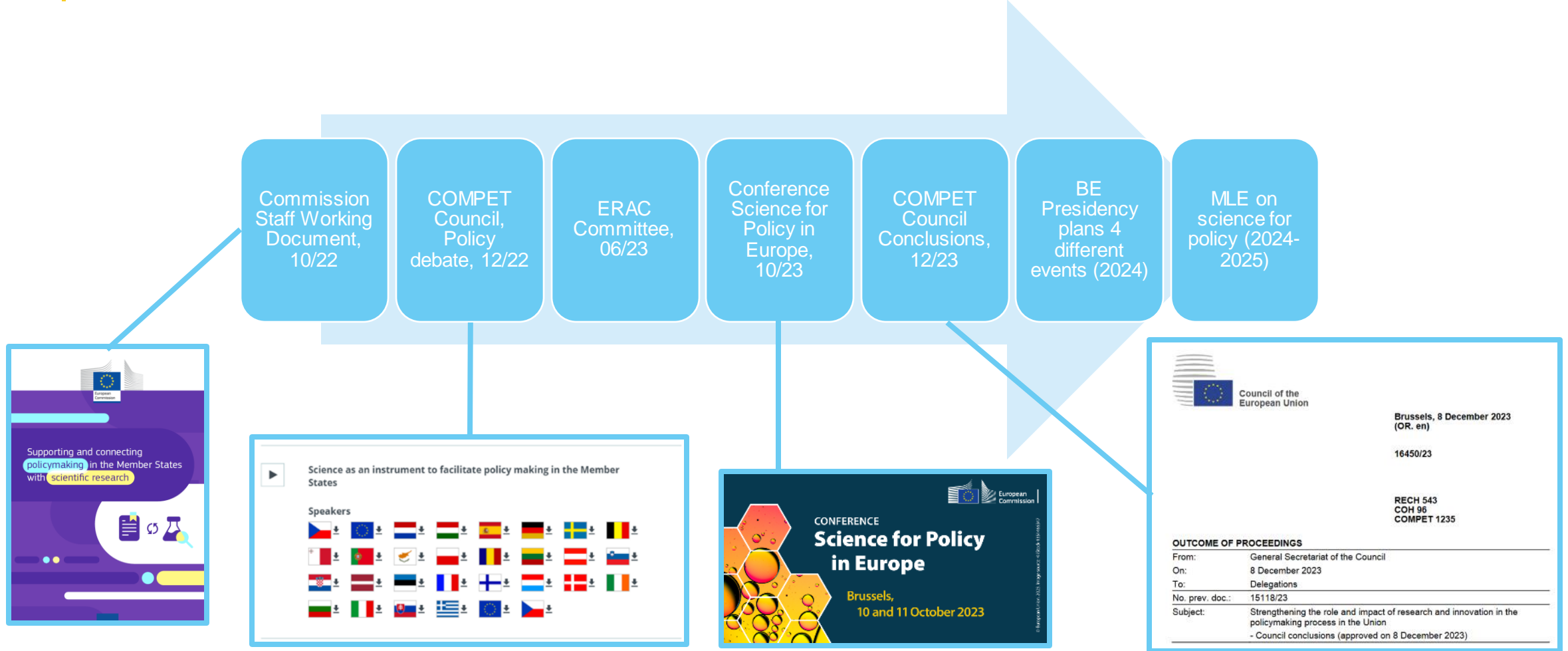


# National science-for-policy ecosystems



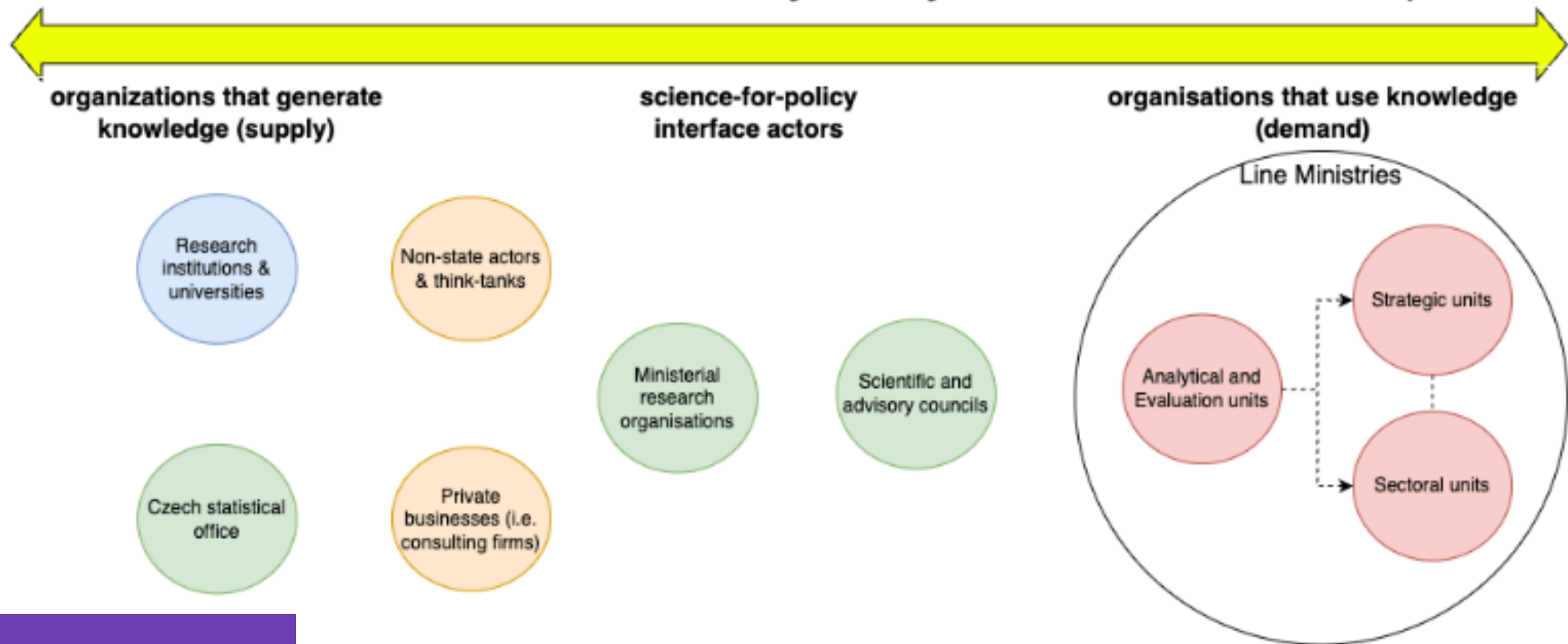


# Science for policy as an emerging policy



# The Czech Science-for-policy ecosystem

Visualisation of the Science-for-Policy ecosystem in the Czech Republic



Building capacity for evidence-informed policymaking in governance and public administration in a post-pandemic Europe

*Image from Diagnostic report for the Czech Republic.  
This is an administrative and internal document to be published at the end of the project.*

# Thank you !



© European Union 2023 or when needed © European Atomic Energy Community, 2023

Unless otherwise noted the reuse of this presentation is authorised under the [CC BY 4.0](https://creativecommons.org/licenses/by/4.0/) license. For any use or reproduction of elements that are not owned by the EU, permission may need to be sought directly from the respective right holders.

Slide 2: © Jukan Tateisi – unsplash.com

Slide 21: 3<sup>rd</sup> circle ©artyway – stock.adobe.com

Slide 27: from left to right ©nextbike – unsplash.com; ©TimSiegert-batcam and ©Grigory Bruev – stock.adobe.com

Slide 30: ©Okea – stock.adobe.com



**EU Science Hub**

[Joint-research-centre.ec.europa.eu](https://joint-research-centre.ec.europa.eu)