

Zkušenosti z hodnocení projektů bezpečnostního výzkumu

Barbara Zitová

Ústav teorie informace a automatizace
Akademie věd České republiky

zitova @ utia.cas.cz



Evropské projekty ECSEL, Horizon (Health, Security), H2020, JU KDT

Contracts and Invitations	
0	12
Waiting for signature	Fully Signed

- Návrh projektu z pohledu hodnotitele
- Co tam určitě dáte
- Co může ve skutečnosti rozhodovat
- Strukturovat, strukturovat, strukturovat ...



Návrh projektu z pohledu hodnotitele

- Byrokratické síto plus etika
- Domácí čtení → report
- Subkomise → report
- Komise → pořadí

Kritéria hodnocení

- Excellence

- Criterion 1 - Excellence

- Current score: 4.0 / 5.0 ; Threshold 3; Priority 1

- Impact

- Criterion 2 - Impact

- Current score: 4.5 / 5.0 ; Threshold 3; Priority 2

- Quality and efficiency of the implementation

- Criterion 3 - Quality and efficiency

- Current score: 4.0 / 5.0 ; Threshold 3; Priority 3

Kritéria hodnocení

Excellence

Clarity, pertinence, ambitious, beyond the state of the art, soundness of the proposed methodology, inter-disciplinarity, gender dimension, innovation content, open science practices, management of research outputs, engagement of citizens, ...

Kritéria hodnocení

Excellence

Clarity, pertinence, ambitious, beyond the state of the art, soundness of the proposed methodology, **inter-disciplinarity, gender dimension, innovation content, open science practices, management of research outputs, engagement of citizens, ...**

Kritéria hodnocení

KPIs
Key Performance Indicators

Excellence

Clarity, pertinence, ambitious, beyond the state of the art, soundness of the proposed methodology, **inter-disciplinarity, gender dimension, innovation content, open science practices, management of research outputs, engagement of citizens, ...**

Kritéria hodnocení



Excellence

Clarity, pertinence, ambitious, beyond the state of the art, soundness of the proposed methodology, inter-disciplinarity, gender dimension, innovation content, open science practices, management of research outputs, **engagement of citizens**, ...

Kritéria hodnocení

Impact

Credibility of the pathways to achieve the expected outcomes and impacts specified in the work programme, and the likely scale and significance of the contributions from to the project.

Suitability and quality of the measures to maximise expected outcomes and impacts, as set out in the dissemination and exploitation plan, including communication activities.

Kritéria hodnocení

Impact

Credibility of the pathways to achieve the expected outcomes and impacts specified in the work programme, and the likely scale and significance of the contributions from to the project.

Suitability and quality of the measures to maximise expected outcomes and impacts, as set out in the dissemination and exploitation plan, including communication activities.

Kritéria hodnocení

Impact

Credibility of the pathways to achieve the **expected outcomes** and **impacts** specified in the work programme, and the likely scale and significance of the contributions from to the project.

Suitability and quality of the **measures** to maximise expected outcomes and impacts, as set out in the **dissemination** and **exploitation** plan, including **communication** activities.

Kritéria hodnocení

KPIs
Key Performance Indicators

Impact

Credibility of the pathways to achieve the **expected outcomes** and **impacts** specified in the work programme, and the likely scale and significance of the contributions from to the project.

Suitability and quality of the measures to maximise expected outcomes and impacts, as set out in the **dissemination** and **exploitation** plan, including **communication** activities.

Kritéria hodnocení

Quality and efficiency of the implementation

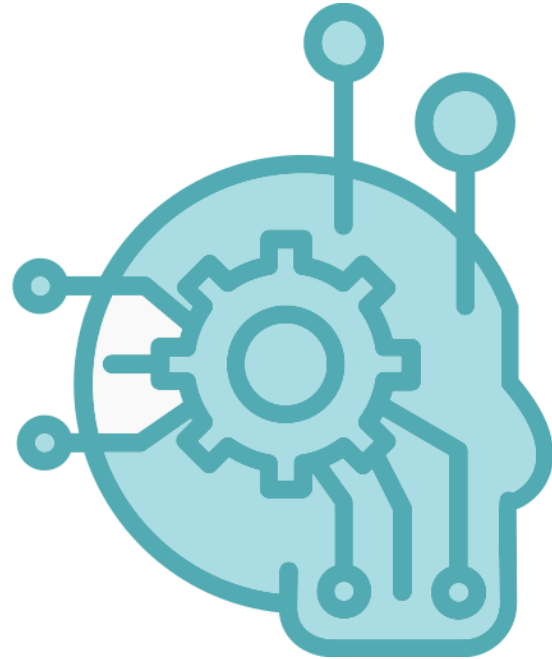
Quality and effectiveness of the work plan, assessment of risks, and appropriateness of the effort assigned to work packages, and the resources overall. Capacity and role of each participant, and the extent to which the consortium as a whole brings together the necessary expertise.

Kritéria hodnocení

Quality and efficiency of the implementation

Quality and effectiveness of the work plan, **assessment of risks**, and **appropriateness of the effort** assigned to work packages, and the resources overall. Capacity and **role of each participant**, and the extent to which the consortium as a whole brings together the necessary expertise.

AI



-> Je v projektu?
Excellence kritérium

Technical robustnes

technické aspekty systémů s AI
včetně odolnosti vůči útokům a zabezpečení, záložní plán,
bezpečnost, přesnost, spolehlivost a reprodukovatelnost

AI „Under HE, the technical robustness of the proposed AI based systems **must** be evaluated ...“

Technické aspekty AI řešení a vývoje

- resilience to attack and security
- fallback plan and general safety
- accuracy
- reliability
- reproducibility

Trustworthy AI zahrnuje zákonnost, etiku a **technickou odolnost**

Vyvinuté systémy by měly být

AI

- technicky robustní - přesné a reprodukovatelné a schopné se vypořádat s možnými selháními, nepřesnostmi a chybami a informovat o nich, s úměrným rizikem, které představují systémy s AI
- sociálně robustní - náležitě zvažují kontext a prostředí, ve kterém působí;
- spolehlivé a fungující - minimalizují neúmyslné a neočekávané poškození, předcházejí nepřijatelnému poškození a chrání fyzickou a duševní integritu lidí;
- schopny poskytnout vhodné vysvětlení svého rozhodovacího procesu, pokud mohou mít významný dopad na životy lidí.



Strukturovanost

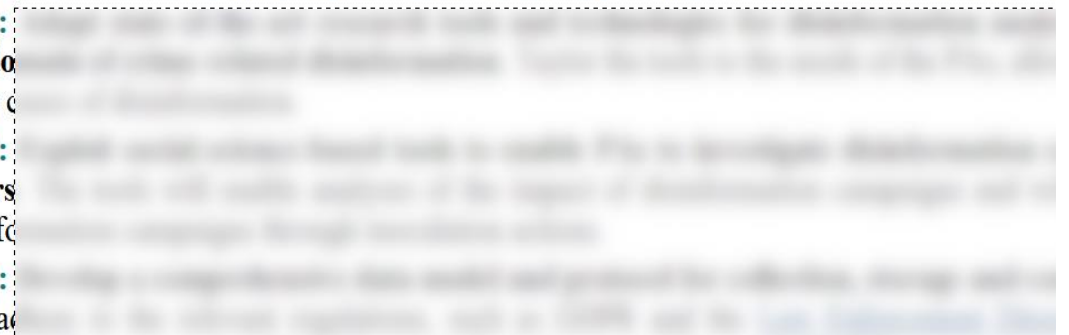


1.1.2 Project Objectives



This can be broken down into **five Key Objectives (KO)** which also represent the innovation &

- **KO1:**
the do
more c
- **KO2:**
actors
disinf
- **KO3:**
will ac



Rada nakonec ...



Děkuji za pozornost !

