

**IMA s.r.o.**

**Zkušenost s účastí v projektech  
ECSEL JU**

**Tomáš Trpišovský**



# Institut mikroelektronických aplikací (IMA) s.r.o.

SME

- R&D proaktivní SME obrat 90 mil.Kč + 25 mil dotací
- Institut ale ve formátu s.r.o

LE

- Od roku 2021 R&D centrum pro WITTE Automotive
- 75 FTE
- -> kategorie LE

=>

- Nutnost vyššího spolufinancování
- Ale lepší možnost komercializace

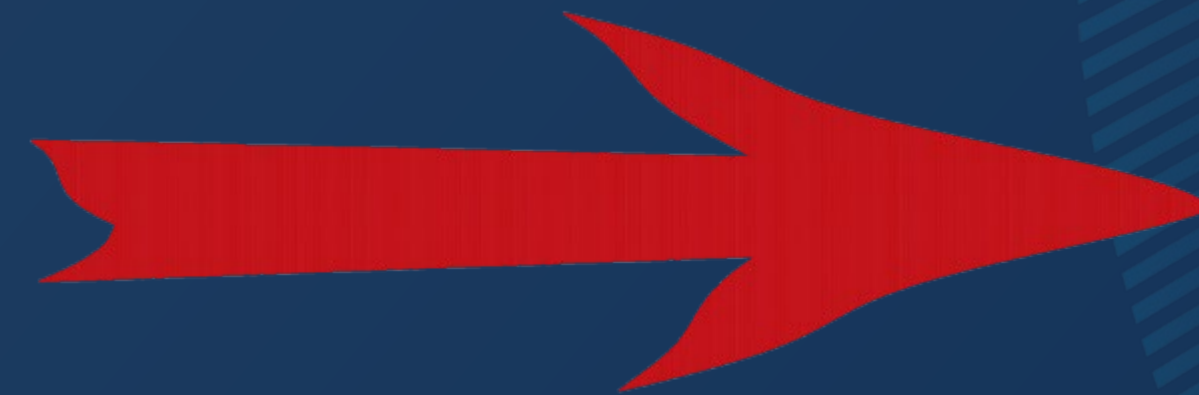
# IMA status update

IMA became member of WITTE Automotive group by Jan 2021 & migrated SME -> LE



# Zkušenost IMA v rámci ECSEL / KDT

- Průběžná účast na jednáních ECSEL / KDT  
-> *Strategic Research & Innovation Agenda 2022*
- Synergie mezi návrhy projektů a potřebou IMA
- Podpora konsorcia konkrétními přínosem IMA + angažovaností
- Vítané jsou technologické demonstrátory, disseminace a komercializace
- Nezbytná je spolupráce s partnery na národní úrovni
- Příklady: ECSEL DAIS a ECSEL StorAlge



# DAIS Distributed Artificial Intelligent Systems

## Advanced mechatronic component - Use cases of WITOL®

### Automotive

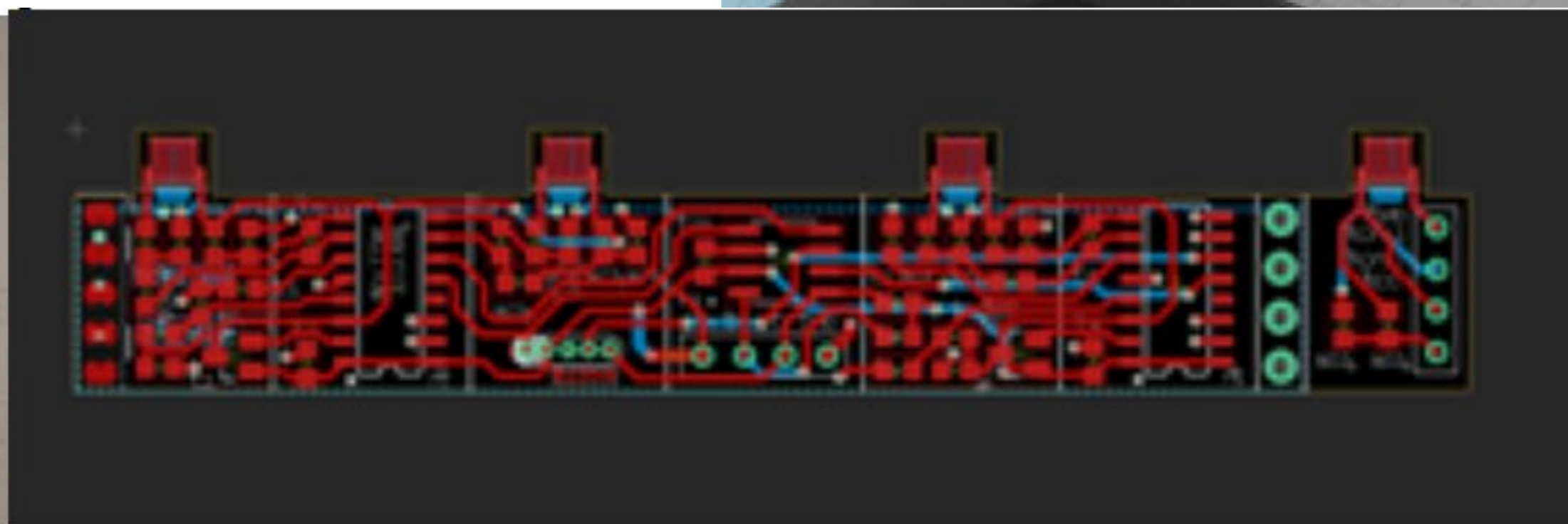
- Roof racks, Seats

### Building construction

- Glass mounting

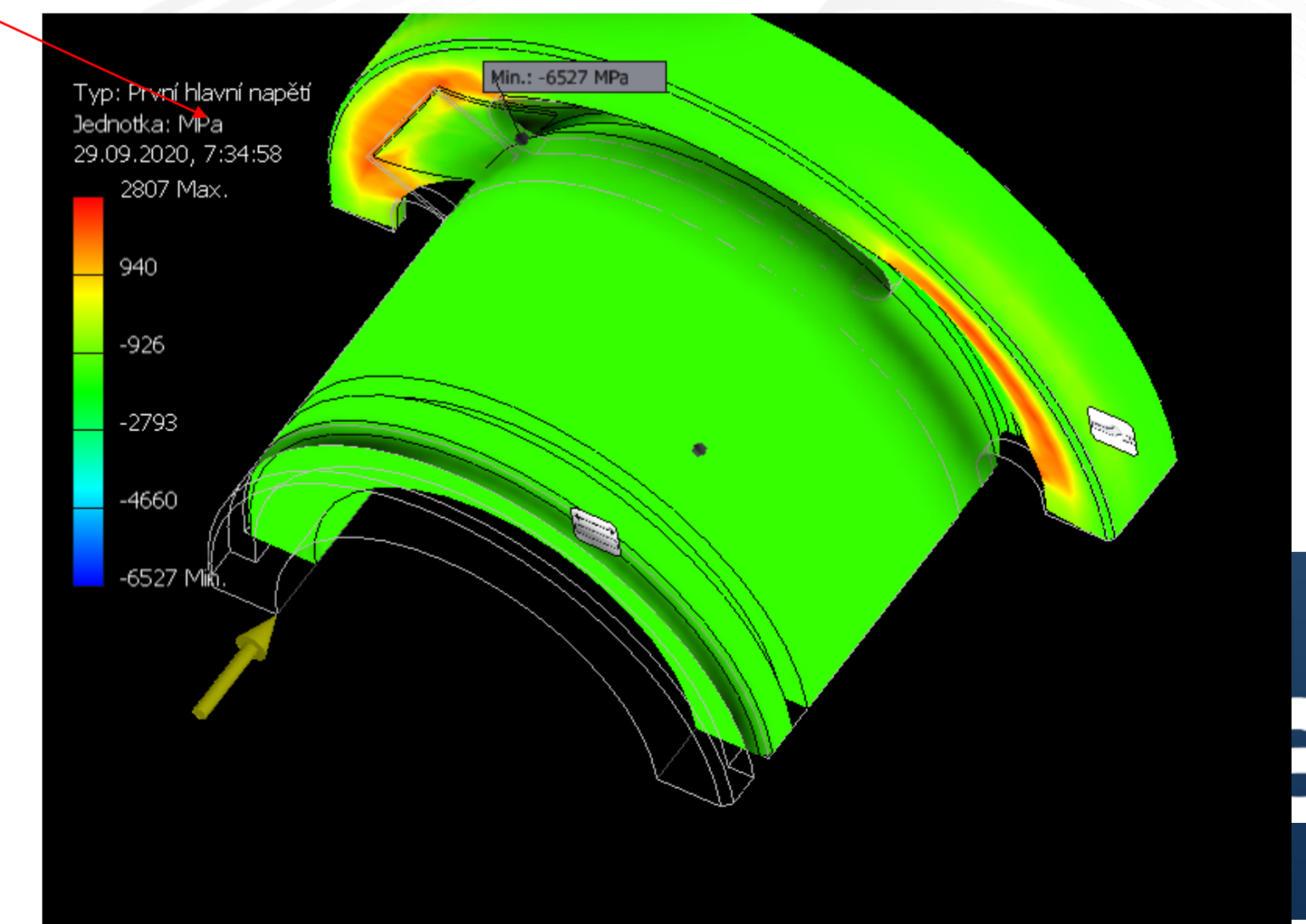
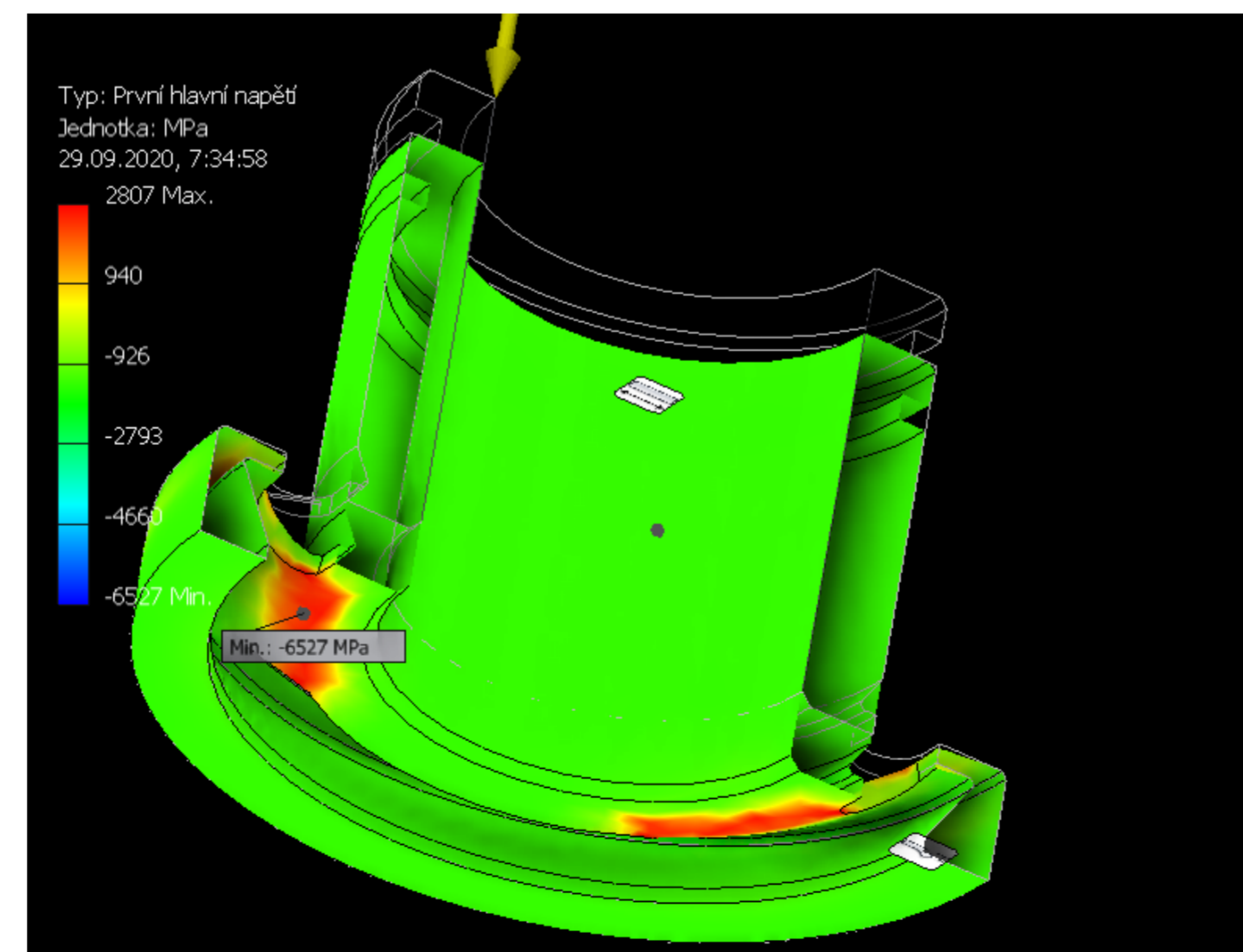
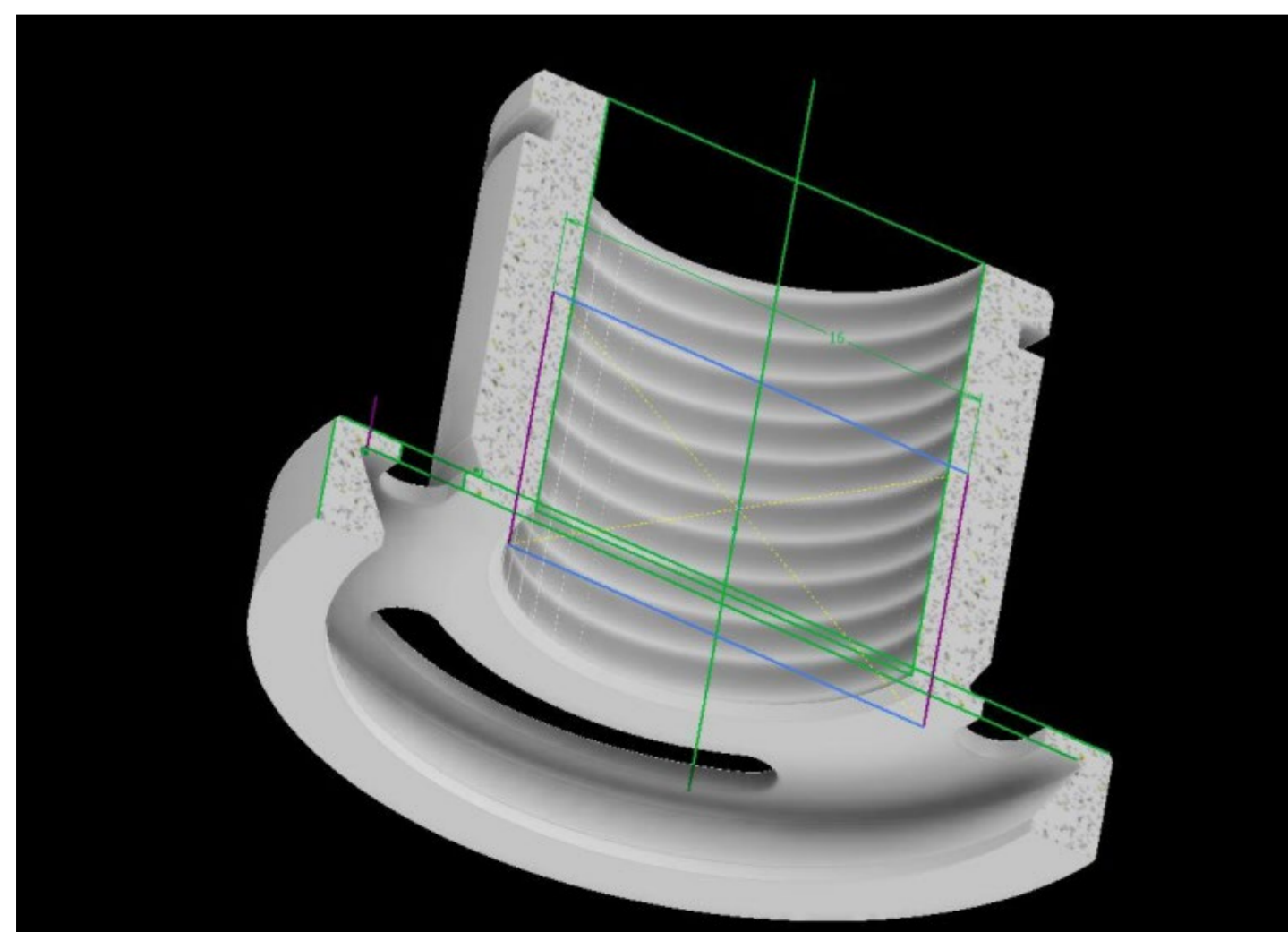
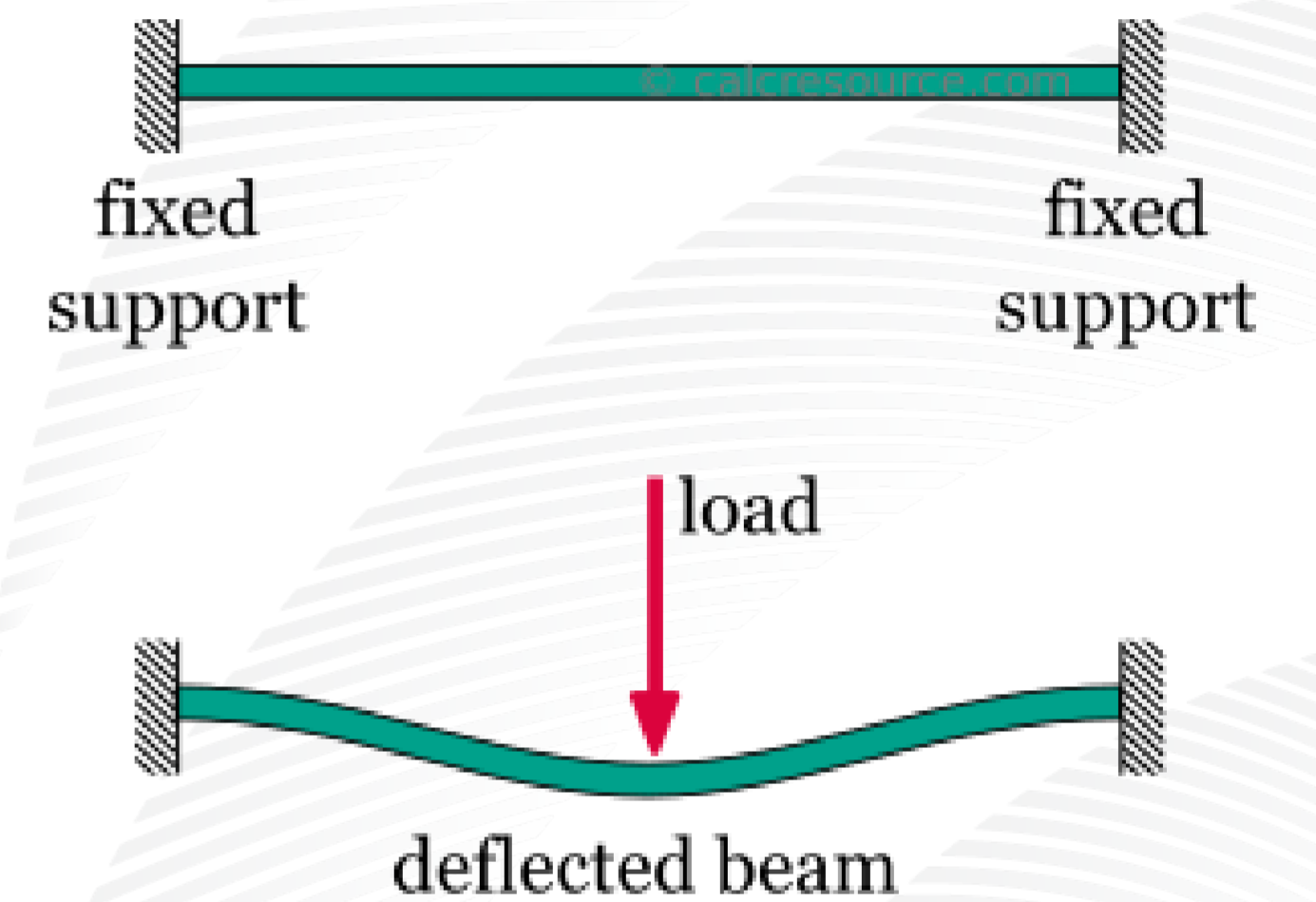
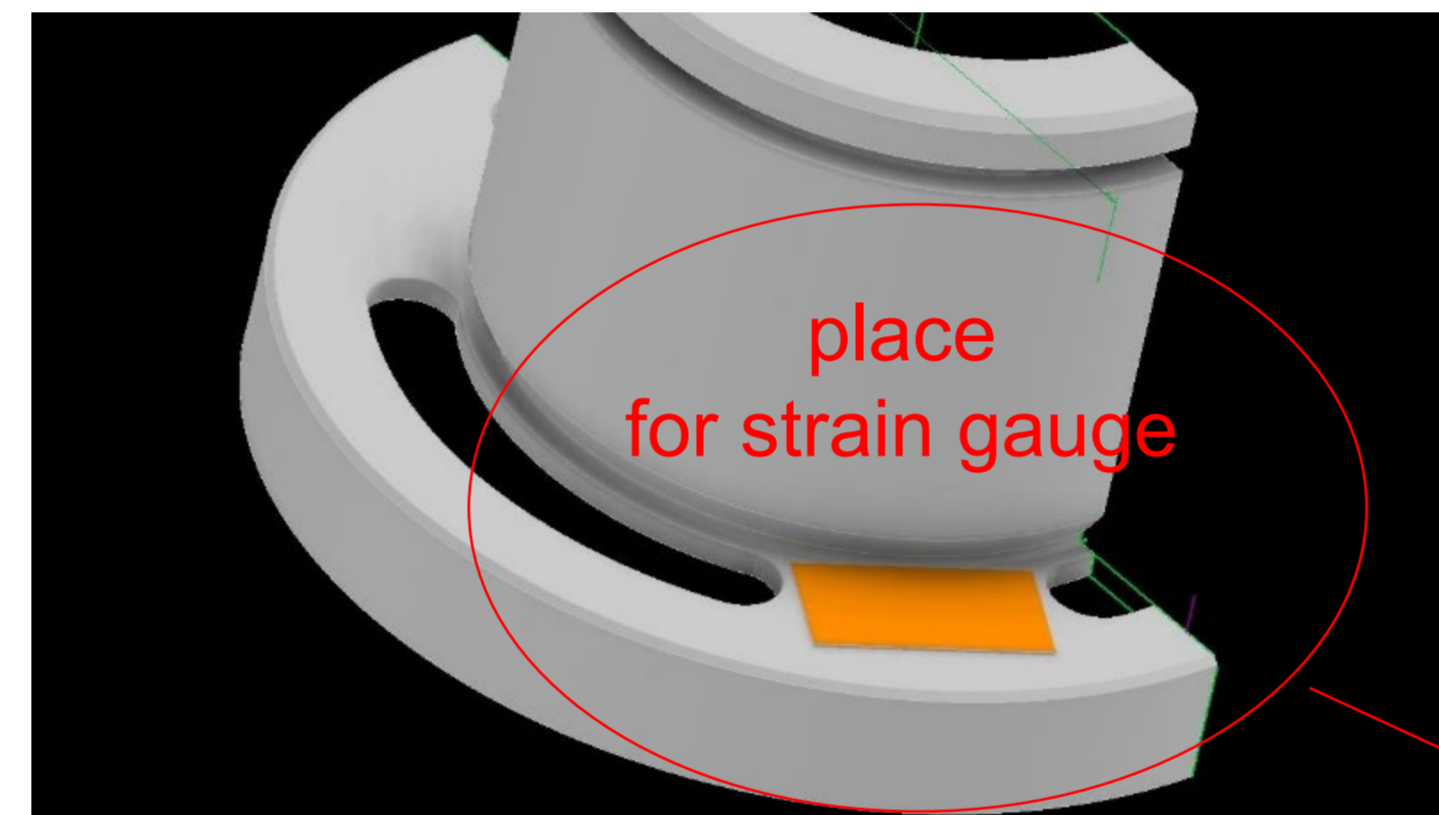
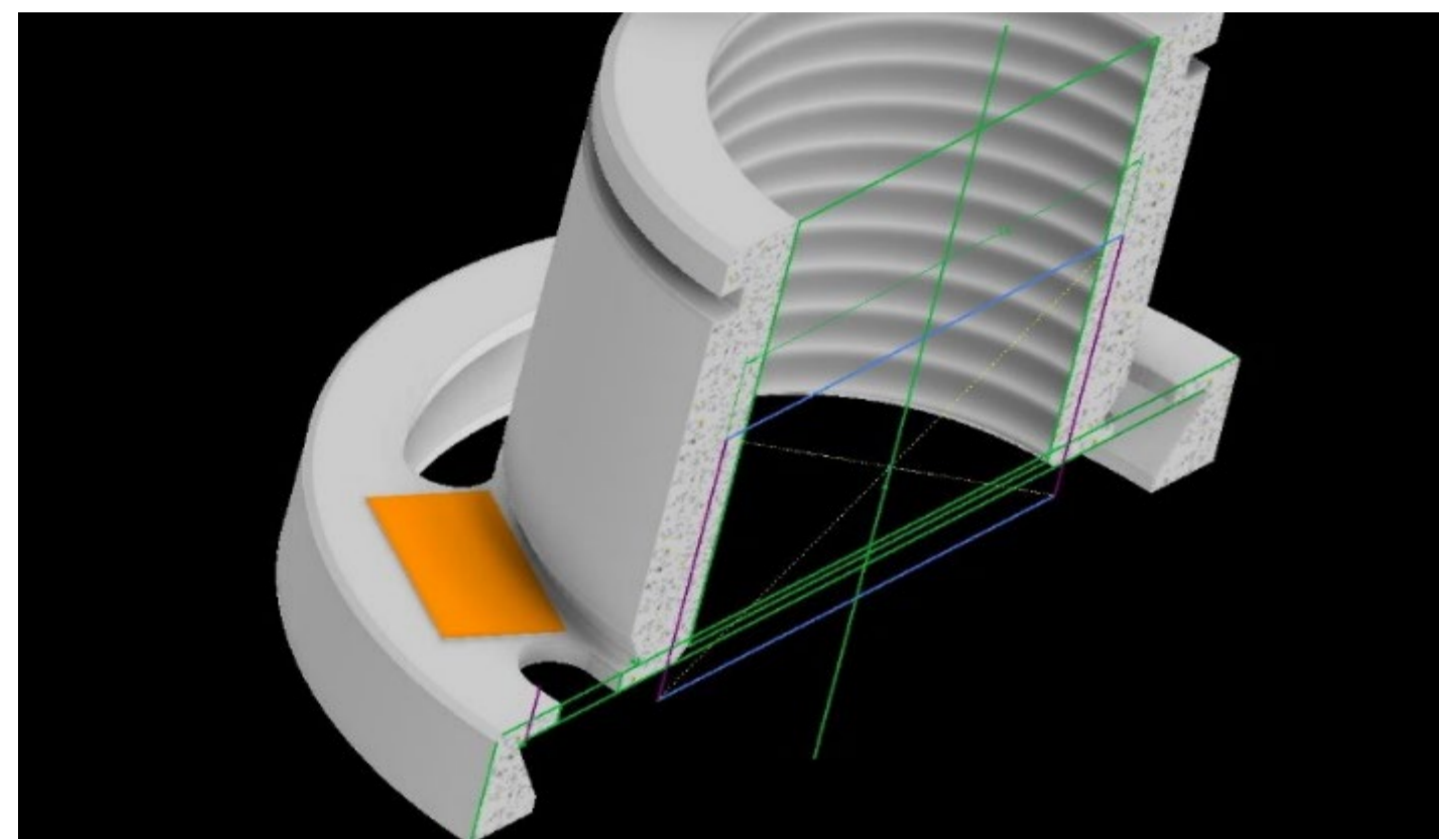
### Health

- Surgery



# Analysing of surface for a strain gauge application

Design and material is realized (by TUL) in accordance with requirements for electronic component installation by IMA and BUT



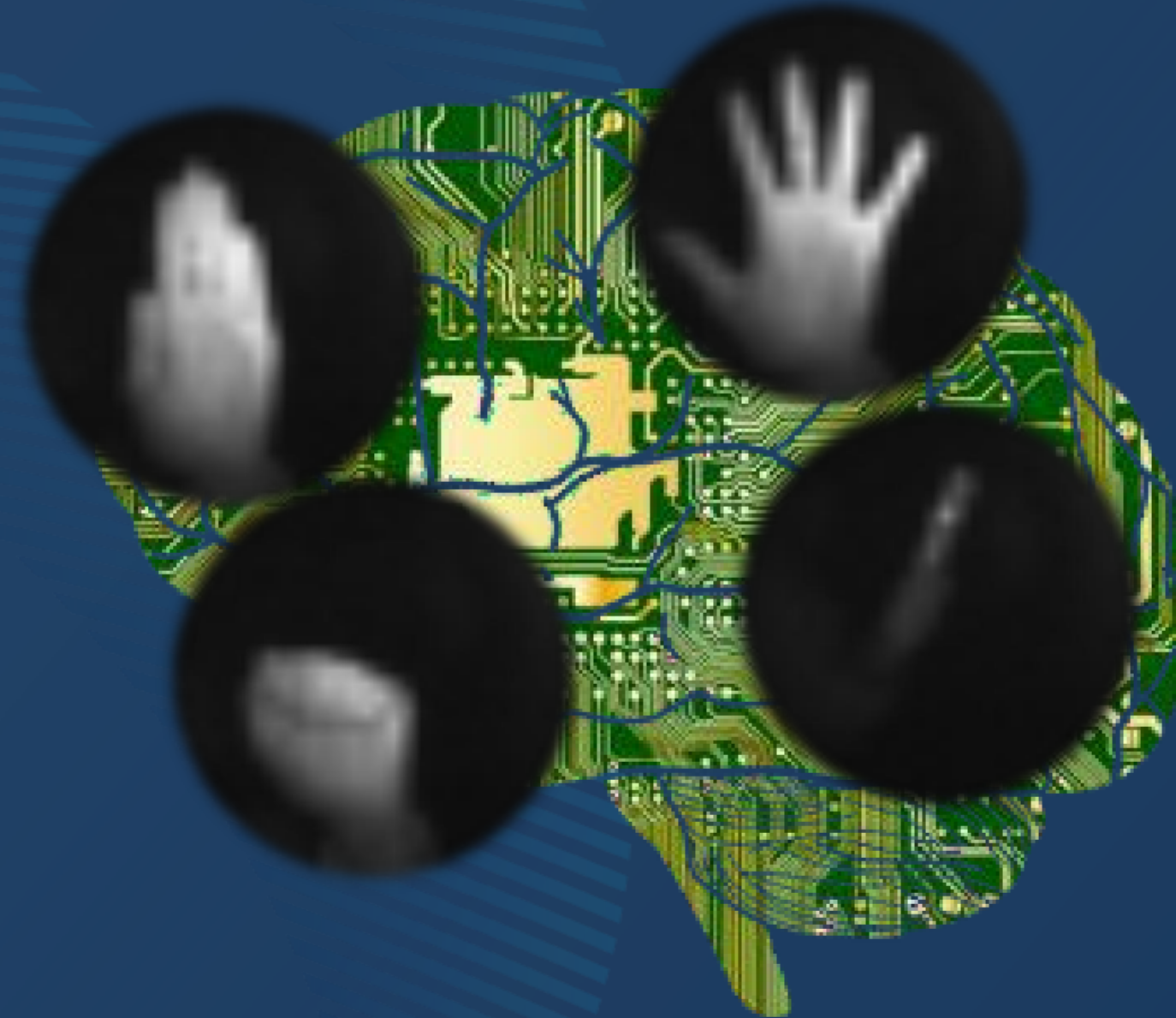
# StorAlge

Embedded storage elements on next MCU generation ready for AI on the edge

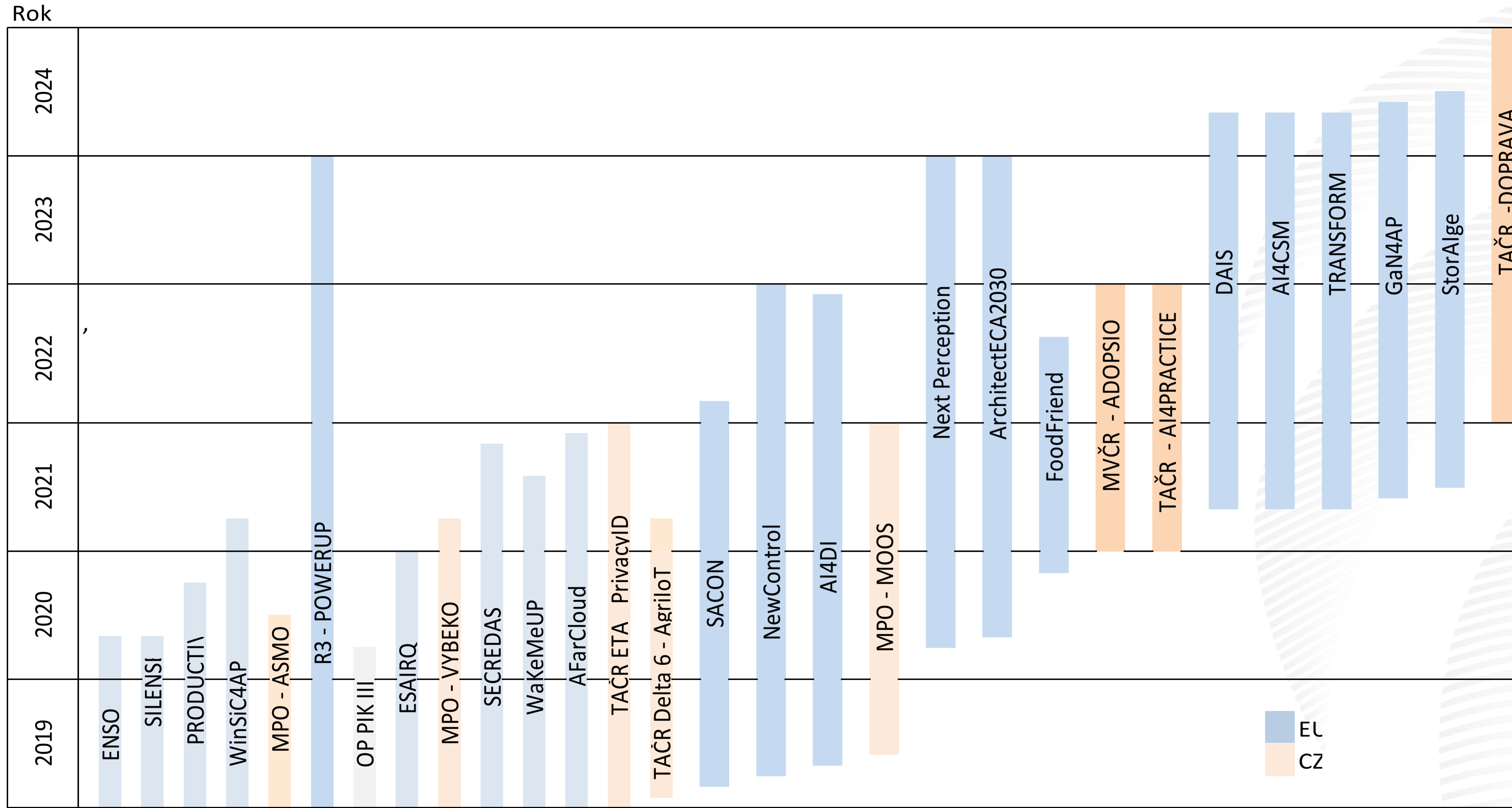


Low resolution Time of Flight sensor matrix gesture recognition

Neural Network for embedded FD SOI čip on 28 nm -> AI within edge



# Návaznost R&D projektů v IMA







IMA s.r.o.

Na Valentince 1,  
150 00 Prague,  
Czech Republic

**[www.ima.cz](http://www.ima.cz)**

Presentation made by TT

Tel: (+420) 603 207 900 | E-mail: [tomas.trpisovsky@ima.cz](mailto:tomas.trpisovsky@ima.cz)